



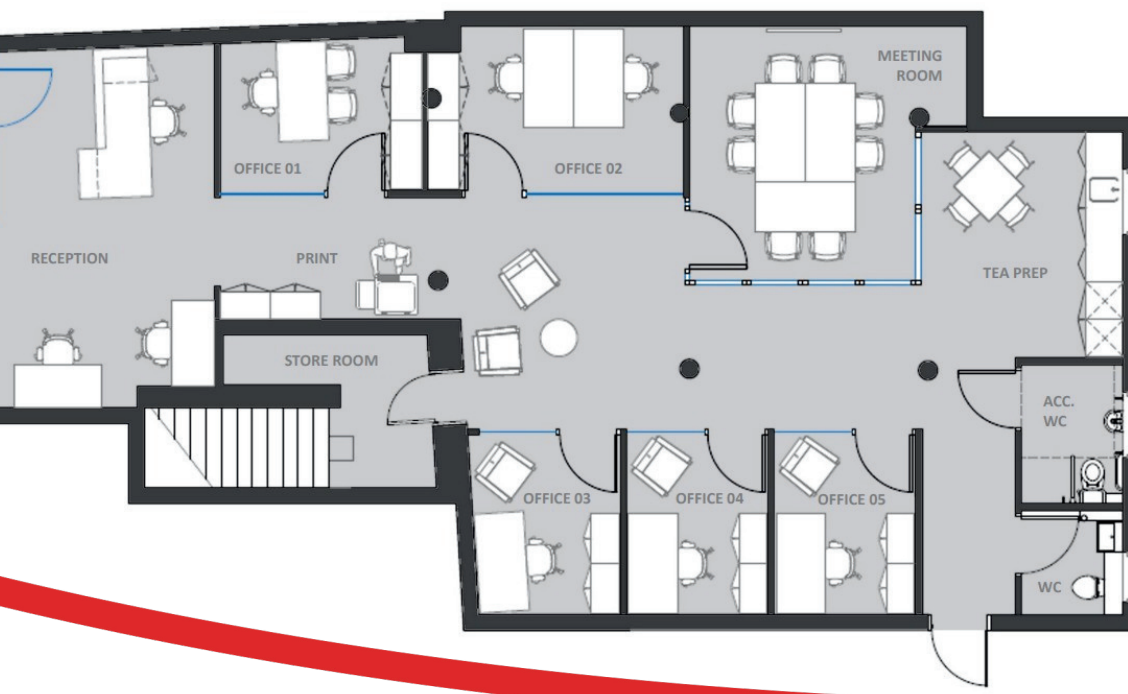
TO LET

**Self contained,
secure office units**

**Ranging from
71 Sq Ft to
115.5 Sq Ft**

**THE MAYGATE EXCHANGE
13-15 MAYGATE
DUNFERMLINE
FIFE, KY12 7NE**





CONTACT

The Town Centre
Development
Team

TownCentre@fife.gov.uk

Description

Located in the heart of Dunfermline's historic Heritage Quarter, Maygate combines rich history with modern convenience. Home to independent shops, cafés, and services, it offers a vibrant setting for businesses. At its centre, the Maygate Exchange provides flexible, modern office space for start-ups and early-stage businesses looking to grow in a well-connected city location.

Features

- Ground floor access
- Five self contained, lockable office units
- Hot desk space
- Meeting room with retractable wall
- Communal kitchen facilities
- Standard and disabled toilet facilities

Accommodation

Office	Size Sq Ft
Office 1	89.4
Office 2	115.5
Office 3	74.3
Office 4	71.3
Office 5	71.3

For more information on pricing please email towncentre@fife.gov.uk



Fife Council give notice that: (i) the particulars are set out as a general outline only for the guidance of intended purchasers or lessees and do not constitute, nor constitute part of, an offer or contract; (ii) all descriptions, dimensions, reference to condition and necessary permissions for use and occupation, and other details are given without responsibility and any intending purchasers or tenants should not rely on them as statements or representations of fact but must satisfy themselves by inspection or otherwise of the correctness of each item.