



# Business Development Support In Fife

Economic Development Team



Fife means business

# Contents

INVEST FIFE	3
A REGION TO GROW	4
CONNECTIVITY TO THE REST OF THE WORLD	6
SKILLED WORKFORCE	8
MODERN BUSINESS INFRASTRUCTURE	10
BUSINESS SUPPORT AND PARTNERS	12

# Invest Fife

**Fife Council’s Economic Development team works closely with Fife Council Planning Services and is committed to providing a flexible approach to your needs – whether you have a new investment project or you are planning to grow your indigenous business in Fife.**

Our team ethos and what drives our services to you is our commitment to making “Fife the best place to do business”.  
We are dedicated to developing a team approach to every enquiry that comes to us no matter what size or scope of your proposition. We will work with you beyond the investment journey so that your business grows and succeeds in Fife.

**Our supportive, experienced and well-connected team can:**

- Provide a designated case officer as a single point of contact
- Provide advice, guidance and support to develop significant planning applications for applicants in terms of the process and timescales.
- Facilitate access to finance, grants and both local and national incentives
- Offer relocation advice and tours. Virtual tours are also available
- Help to find the best space for your business, be it offices, co-workspaces/ hubs or industrial and bespoke builds
- Assist with information on new developments and planning proposals
- Provide access to the Opportunities Fife partnership which can support local businesses in accessing local employability initiatives.
- Liaise with public transport providers to establish new infrastructure where appropriate
- Facilitate new business connections and introduce you to sector networks



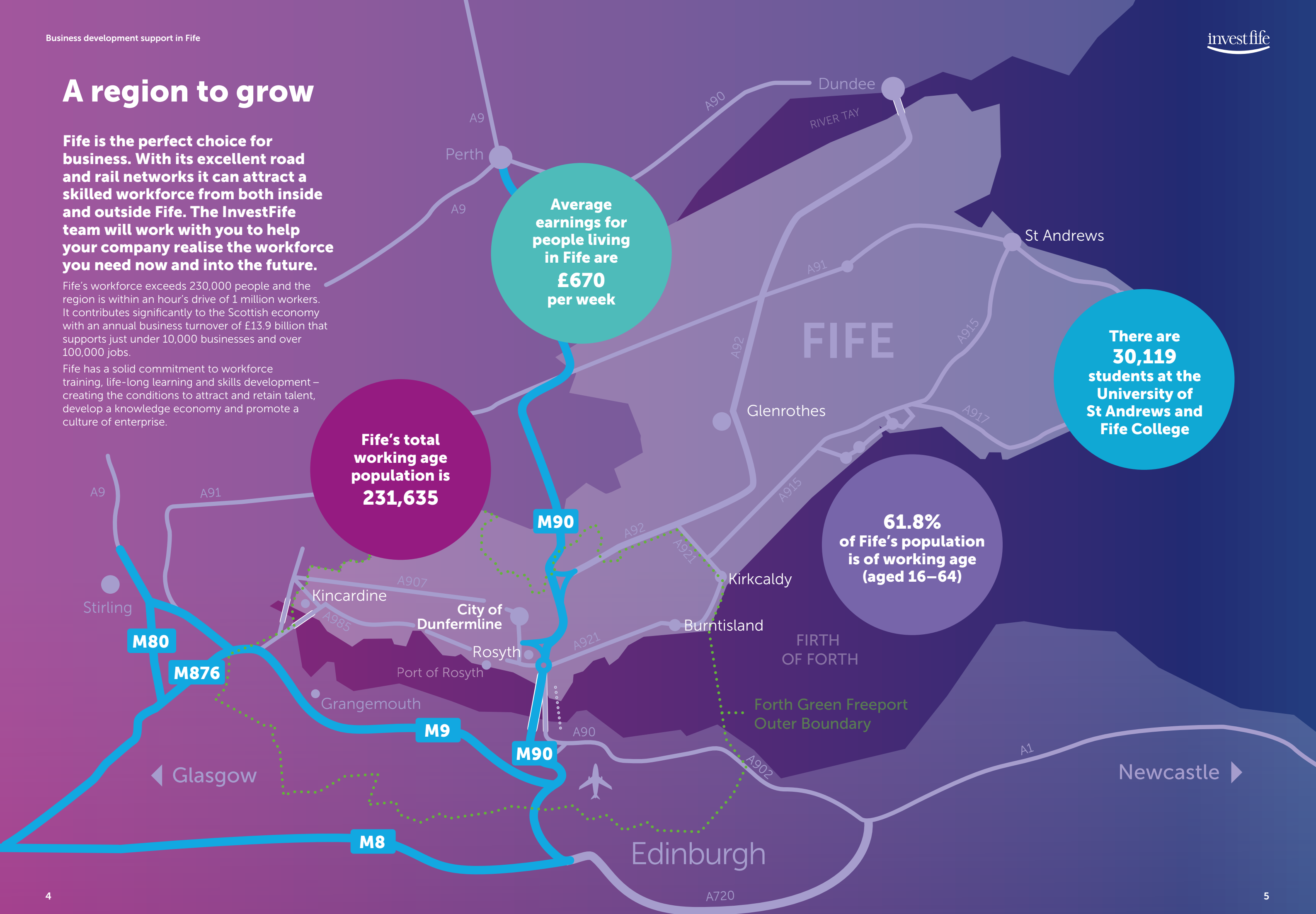
#fifemeansbusiness

## A region to grow

**Fife is the perfect choice for business. With its excellent road and rail networks it can attract a skilled workforce from both inside and outside Fife. The InvestFife team will work with you to help your company realise the workforce you need now and into the future.**

Fife's workforce exceeds 230,000 people and the region is within an hour's drive of 1 million workers. It contributes significantly to the Scottish economy with an annual business turnover of £13.9 billion that supports just under 10,000 businesses and over 100,000 jobs.

Fife has a solid commitment to workforce training, life-long learning and skills development – creating the conditions to attract and retain talent, develop a knowledge economy and promote a culture of enterprise.





# Connectivity to the rest of the world

Our transport links via road, rail and even sea enable businesses of all types to use Fife as a base.

**ROAD**

Edinburgh	45 Minutes
Dundee	45 minutes
Stirling	55 Minutes
Perth	35 Minutes
Glasgow	1 hour

**MOTORWAYS**

South & west: M90, M8, M73, M74, M6, A1M & M1  
North: M90

**AIR**

**Airport connections from Edinburgh**

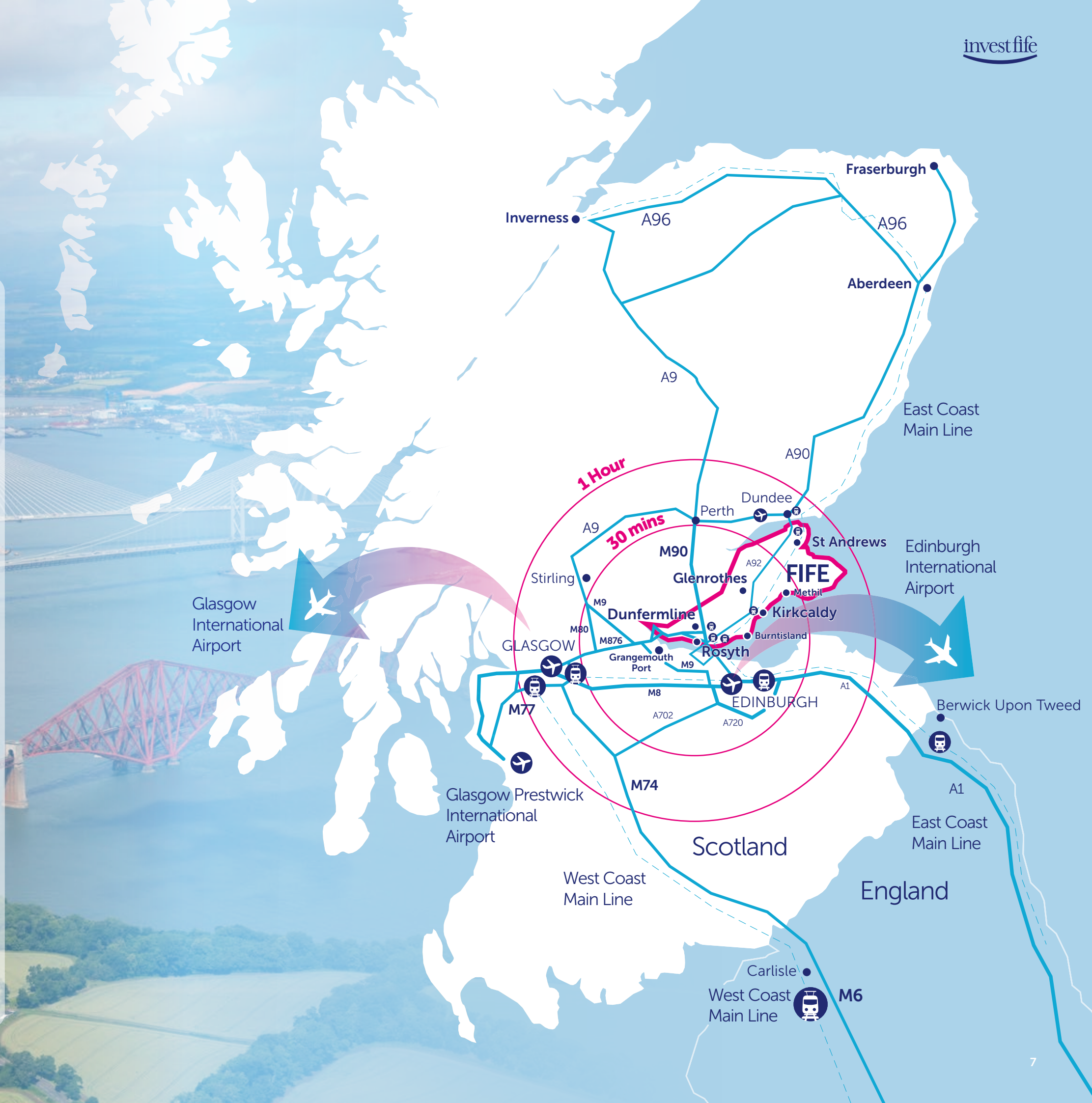
- 20 direct UK destinations
- 87 International including US and Middle East
- 46 flights per day to London

**RAIL**

- Main East Coast Rail link
- Fife Circle – Edinburgh
- The New Levenmouth Rail Link due to open 2024
- Main West Coast Rail link
- Freight links

**PORTS**

- Rosyth Deep Water Port
- Grangemouth Docks
- Kirkcaldy
- Methil
- Burntisland





# A skilled workforce

**Fife is one of the best-located regions in the UK. It is well-connected and has first-class business propositions, a capable workforce and lower costs. It is also located between the City of Edinburgh and Dundee, making it an ideal location to do business.**

Companies locating to and located in Fife can benefit from recruitment, selection and training support through Fife Council's Opportunities Fife and Employability Team.

### Developing the Young Workforce

Developing the Young Workforce aims to create a wide variety of high-quality learning opportunities linked to skills needs and employer demands, enabling young people to be informed and empowered to make intelligent decisions about the best route to work for them.

For more information visit: <https://dywfife.com>

### Enterprise in Education

At Fife Council, the Economic Development team is committed to linking education and industry.

Our Meet the Business programme is a great way to invest in your future workforce by sharing a short bio of your business and the skills required to work in your industry, which helps give our young people an insight into working life in the industry.

For more information, please visit: [www.investfife.co.uk/who-are-we/culture-of-enterprise](http://www.investfife.co.uk/who-are-we/culture-of-enterprise)

### University of St Andrews

The University of St Andrews ranks in the top 100 universities in the world. Founded in 1413, it offers students a world-renowned education that prepares them for working in a professional environment.

For more information about the University and what it has to offer please visit: [www.st-andrews.ac.uk](http://www.st-andrews.ac.uk)

### Fife College

Fife College boasts first-class facilities, expert teaching and a wide range of courses suited to the needs of local and national industries. With five regional campuses and a host of local learning centres, the College is within easy reach of the Fife community, making learning even more accessible. Fife College delivers over 1,000 education and training courses for over 22,000 students studying at various levels, from introductory and access programmes, through craft and intermediate levels to higher diplomas, degrees and post-graduate studies.

For more information visit [www.fife.ac.uk](http://www.fife.ac.uk)

### Scotland's Rural College

Scotland's Rural College (SRUC) is a specialist horticultural and agricultural institution. Based at the Elmwood Campus in Cupar, SRUC plays a national strategic role in serving the needs of the rural land-based sector and more significantly has become the premier training provider to Scotland's growing golf industry and is recognised as a Centre of Excellence in golf-related studies.

For more information visit: [www.sruc.ac.uk](http://www.sruc.ac.uk)

### Opportunities Fife Partnership

Opportunities Fife provides local employers with a single-entry point, acting as a gateway to the various services that are available to help you and your business. They will discuss your recruitment needs, develop tailored training solutions to meet the real skill needs of your business and match these to local individuals looking for work.

For more information visit: [www.opportunitiesfife.org](http://www.opportunitiesfife.org)

### Fife is committed to lifelong learning and developing further and higher education.

Fife College enjoys excellent links with industry and has a proud vocational and skills-based training and education tradition.

Fife is also home to Scotland's oldest university, The University of St Andrews, which attracts students and teachers worldwide. Its world-class reputation in teaching and research consistently places St Andrews top in Scotland and among the top five in the UK.

### The UK university rankings

University of St Andrews	4
University of Edinburgh	12
University of Glasgow	26
University of Strathclyde	31
University of Aberdeen	35
University of Heriot Watt	44
University of Stirling	51
University of Dundee	58
Glasgow Caledonian University	79
Edinburgh Napier University	89
Robert Gordon University	92
University of Abertay Dundee	102
Queen Margaret University	102
University West of Scotland	128

Source: [www.thecompleteuniversityguide.co.uk/league-tables/rankings](http://www.thecompleteuniversityguide.co.uk/league-tables/rankings)



APPRENTICESHIPS . SCOT  
From Skills Development Scotland

Fife College

Opportunities Fife  
connecting learning, skills and jobs

SRUC



**2,712**  
Modern Apprentices in  
training in Fife

**1 million**  
workers within an  
hours drive

**£13.9Bn**  
Annual  
business turnover

# Modern business infrastructure

**It's not just the location and the people that make Fife such a great place to invest, it's the help you'll receive too.**

Whether you're looking for office space, need the inside track on what's happening in the region, or want to know how to tap into the best talent, we're here to help.

Invest Fife helps businesses to locate, expand and flourish here in Fife. We provide a range of support services for existing companies and potential investors, making it easy to realise your ambitions for growth.

## Business Property

Fife Council's Business Property Team manages a portfolio of premises to lease containing almost 360 industrial and office premises at locations throughout Fife. We can also assist in a search for available business properties within Fife.

## Employment Land for Business

Fife Council maintains a portfolio of land which contributes to the available supply of employment land across Fife. The portfolio offers a range of quality sites in terms of location and size for office, manufacture, storage and distribution uses.

## Fife Council Trade Development

Delivered by Fife Council's Economic Development Team, the Trade Development programme offers a practical and effective way for Fife companies to participate in events and trade shows easily. We organise group stands and visits for major UK and international exhibitions and conferences, including providing support services from advice and information to customised training programmes. Support and advice are available from Fife Chamber of Commerce, Business Gateway Fife and Scottish Development International in conjunction with Fife Council's Economic Development team, for businesses looking to consider trading into new markets and those already exporting but wishing to improve current processes and expand further.

## Flexible workspaces including event space and meeting rooms available

Flexible workspaces across Fife offer modern, professional, affordable offices, together with modern events space, easily accessible co-working areas and private meetings rooms.

**For more information visit:**  
[www.investfife.co.uk/land-property/](http://www.investfife.co.uk/land-property/)

**For more information email:**  
[fifemeansbusiness@fife.gov.uk](mailto:fifemeansbusiness@fife.gov.uk)



## Environmental Services

Environmental Services are responsible for public protection, food safety, trading standards and health and safety enforcement in many businesses. The service is committed to providing high quality advice and assistance to any new or existing business to enable them to comply with any relevant legislation including internet trading.

**For more information visit:**  
<https://www.fife.gov.uk/kb/docs/articles/business2/environmental-health-for-business>

## Planning

Fife Council's Planning team delivers a professional service to customers, including the processing of applications, breaches of planning and pre application advice.

**For more information visit:**  
<https://www.fife.gov.uk/kb/docs/articles/planning-and-building2/planning>

## Building Standards and Safety

Supports all applications to build, ensuring builds meet specific standards and are safe for people to use, save energy and provide facilities for people with disabilities.

**For more information visit:**  
<https://www.fife.gov.uk/kb/docs/articles/planning-and-building2/building-standards-and-public-safety>

## Fife Trusted Trader Scheme

This scheme was launched in January 2011 and is led by Fife Council Trading Standards. It's a membership scheme that uses an online directory of local trades committed to treating their customers fairly. Trusted Trader is designed to: help customers avoid rogue traders and make a more informed choice when choosing a trader and promote best practices.

**To apply to become a part of the scheme or to search for a trusted trader visit:**  
[www.trustedtrader.scot/Fife/](http://www.trustedtrader.scot/Fife/)





# Wider business support



## Scottish Enterprise

Scottish Enterprise is Scotland's national economic, enterprise, innovation and investment agency. Scottish Enterprise works with public and private sector partners to develop the business environment and deliver a range of dedicated support services locally, nationally and internationally.

**For more information visit:**  
[www.scottishenterprise.com](http://www.scottishenterprise.com)

## Scottish Development International (SDI)

SDI is an organisation that helps overseas businesses tap into Scotland's key strengths in knowledge, high-level skills, technology and innovation and helps Scottish companies do more business overseas and promote Scotland as an excellent place to live and work. The Scottish Government and Scottish Enterprise jointly operate it.

**For more information visit:** [www.sdi.co.uk](http://www.sdi.co.uk)

## Business Gateway Fife

Business Gateway Fife is part of the integrated economic development team in Fife Council and provides a wide range of support, advice, and business skills workshops to individuals looking to set up a business, as well as assisting newly formed and existing businesses looking to grow and develop. Expert Help for specific projects to achieve business recovery or growth ambitions is also available to business through Business Gateway Fife.

**For more information email:**  
[success@bgfife.co.uk](mailto:success@bgfife.co.uk)  
**visit:**  
<https://www.bgateway.com/local-offices/fife/local-support>

## The Supplier Development Programme (SDP)

SDP is a consortium of Scotland's Local Authorities which aims to assist businesses in Fife to improve their performance in winning contracts with Scottish Public and Private Sector Organisations. SDP offers information, support, news, events and workshops covering procurement issues to help you unravel the tendering process.

**For more information contact:**  
[fifemeansbusiness@fife.gov.uk](mailto:fifemeansbusiness@fife.gov.uk)

## Business Loans Scotland

BLS is a consortium of Scotland's Local Authorities working together to provide loans from £25,000 to £250,000 to start-up and growing businesses throughout Scotland.

**For more information visit:** [www.bls.scot](http://www.bls.scot)  
**contact:** [fundmanager@bls.scot](mailto:fundmanager@bls.scot) or call:  
**01592 858333**

## Funding for SMEs

Delivered through Business Gateway Fife, Fife Council provides a range of repayable and non-repayable funding options for businesses in Fife who are looking to invest in and grow their business or workforce or progress towards Net Zero emissions.

**For more information contact a business adviser at Business Gateway Fife on 01592 858333 or email:** [success@bgfife.co.uk](mailto:success@bgfife.co.uk)

## Food from Fife Network

Food from Fife is a membership organisation supported by Fife Council. It's a way of bringing together one of the region's most exciting and essential industries to support and grow the sector.

**For more information visit:**  
[www.foodfromfife.co.uk/](http://www.foodfromfife.co.uk/)

## Fife Chamber of Commerce

Supports businesses of all sizes across the region. It represents members' interests as a local, independent organisation with a national voice (through its affiliation to the Scottish and British Chambers of Commerce). It makes their views heard in the right places at local, national, UK, and European levels. It provides a range of business services and information and organises events to bring businesses together through an extensive programme of networking meetings, business seminars, and training courses.

**For more information and local contact details visit:** [www.fifechamber.co.uk](http://www.fifechamber.co.uk)

## Centre for Engineering Education and Development (CEED)

CEED is a community of businesses and academics who have joined together to pool their talents, expertise, experience and resource in the pursuit of operational excellence. They aim to improve operational efficiency and effectiveness—which will impact the bottom line.

**For more information visit:**  
[www.ceed-scotland.com](http://www.ceed-scotland.com)

## National Manufacturing Institute Scotland (NMIS)

NMIS is a group of industry-led manufacturing research and development facilities with a network of partners across Scotland brought together to boost the manufacturing community.

Focused on revolutionising skills, productivity, and innovation to help attract investment and make Scotland and the wider UK a global leader in advanced manufacturing.

**For more information visit:** [www.nmis.scot](http://www.nmis.scot)

## The Federation of Small Businesses (FSB)

FSB is the business membership organisation in Fife with over 1400 members. As well as being a powerful lobbying group representing the interests of small businesses both locally and nationally, the FSB offers an unrivalled portfolio of benefits.

**For more information visit:** [www.fsb.org.uk](http://www.fsb.org.uk)

## Welcome to Fife

Welcome to Fife aims to support the tourism industry in Fife. The Industry Leadership Group works with businesses across Fife to develop and deliver the Fife Tourism Strategy. Tourism related information and support for businesses is available at <https://industry.welcometofife.com>

The consumer site is [www.welcometofife.com](http://www.welcometofife.com) – businesses can register here and promote themselves for free through their own business listing.

## Support for Social Enterprise

### Fife Voluntary Action (FVA)

FVA supports new and existing third sector organisations that operate in Fife. They work with community groups, voluntary organisations, charities, social enterprises and individuals looking to set up a new organisation.

**For more information visit:**  
[www.fva.org/social\\_enterprise.asp](http://www.fva.org/social_enterprise.asp)





[www.investfife.co.uk](http://www.investfife.co.uk)  
[fifemeansbusiness@fife.gov.uk](mailto:fifemeansbusiness@fife.gov.uk)



**For more information contact:**

**Invest Fife  
Fife House  
North Street  
Glenrothes  
Fife  
KY7 5LT**



Invest Fife is an investment initiative supported by Fife Council and works in partnership with Scottish Enterprise and Scottish Development International.

**#fifemeansbusiness**