

Mid-Fife Economic Investment Prospectus

Investing in the future, creating opportunity

#fifemeansbusiness

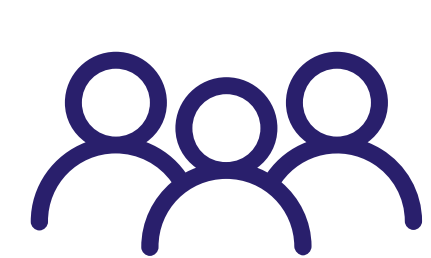
Since the publication of the [Plan 4 Fife](#), Fife's overarching Community Plan, a key objective has been accelerating the economic regeneration of Mid-Fife. This has been progressed economically by identifying place-based inclusive growth projects and by adopting a co-ordinated multi-agency response through the preparation and refresh of a [Mid-Fife Investment Proposition and Economic Action Plan](#).

The plan identifies six key priorities and has a delivery focus through the consideration of potential sources of funding. The plan also recognises the challenges of addressing the climate emergency, and that successful inclusive growth in Mid-Fife will also involve community wealth-building initiatives and future economic collaboration.

The recent recognition of [Dunfermline](#) as Scotland's newest city provides further opportunity to contextualise and further accelerate economic growth in Mid-Fife given the neighbouring proximity of the two areas, the shared infrastructure connectivity provided by the M90 /A92 road corridors and Fife Circle rail line, and complementary business bases.

The Mid-Fife Investment Proposition sits alongside the Fife Economic Strategy to provide a clear indication of where new investment growth can be accommodated or existing economic activity further enhanced within the Mid-Fife area. The Proposition presents a framework of proposed programmes, projects and opportunities that are regularly reviewed and updated and target appropriate interventions in Mid-Fife that can be developed, implemented and/or accelerated as funding and resourcing opportunities are identified and secured.

Population of Fife



374,730
PEOPLE

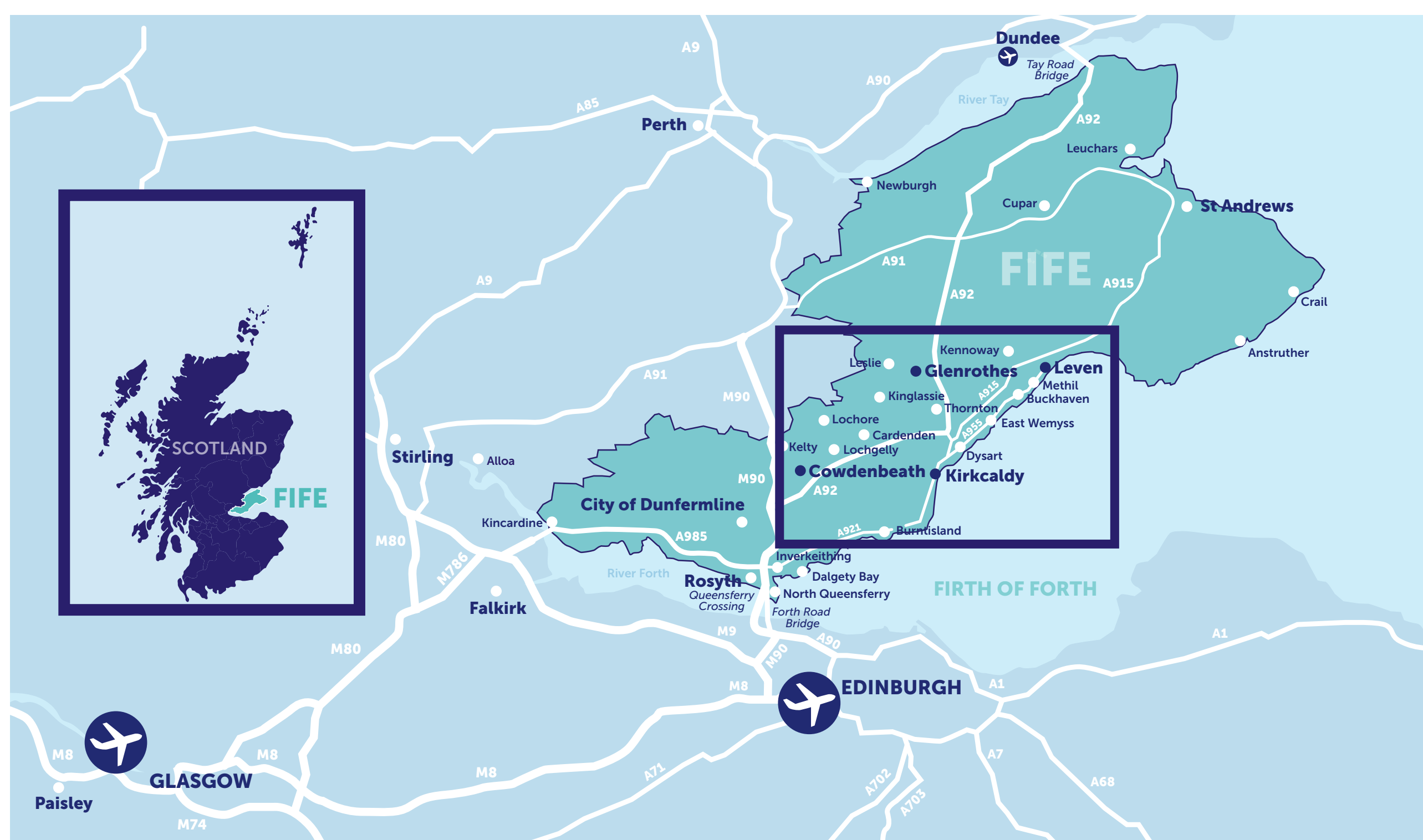


231,635
WORKING POPULATION



£599
WEEKLY AVERAGE EARNINGS

Where is Mid-Fife?

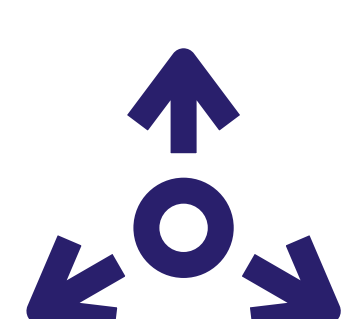


Distance from key cities

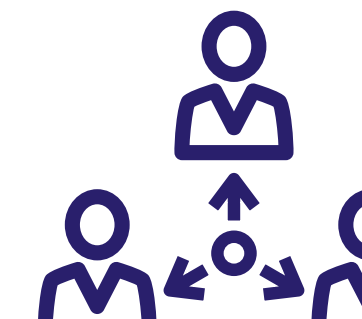
Based on times from Kirkcaldy

	By Train	By Car
Edinburgh	47mins	55mins
Glasgow	2hrs	1hr 10mins
Dundee	40mins	50mins
Perth	35mins	47mins
London	6hrs	7hrs 30mins
London	1hr 15mins	
London City	1hr 45mins	

Business in Mid-Fife

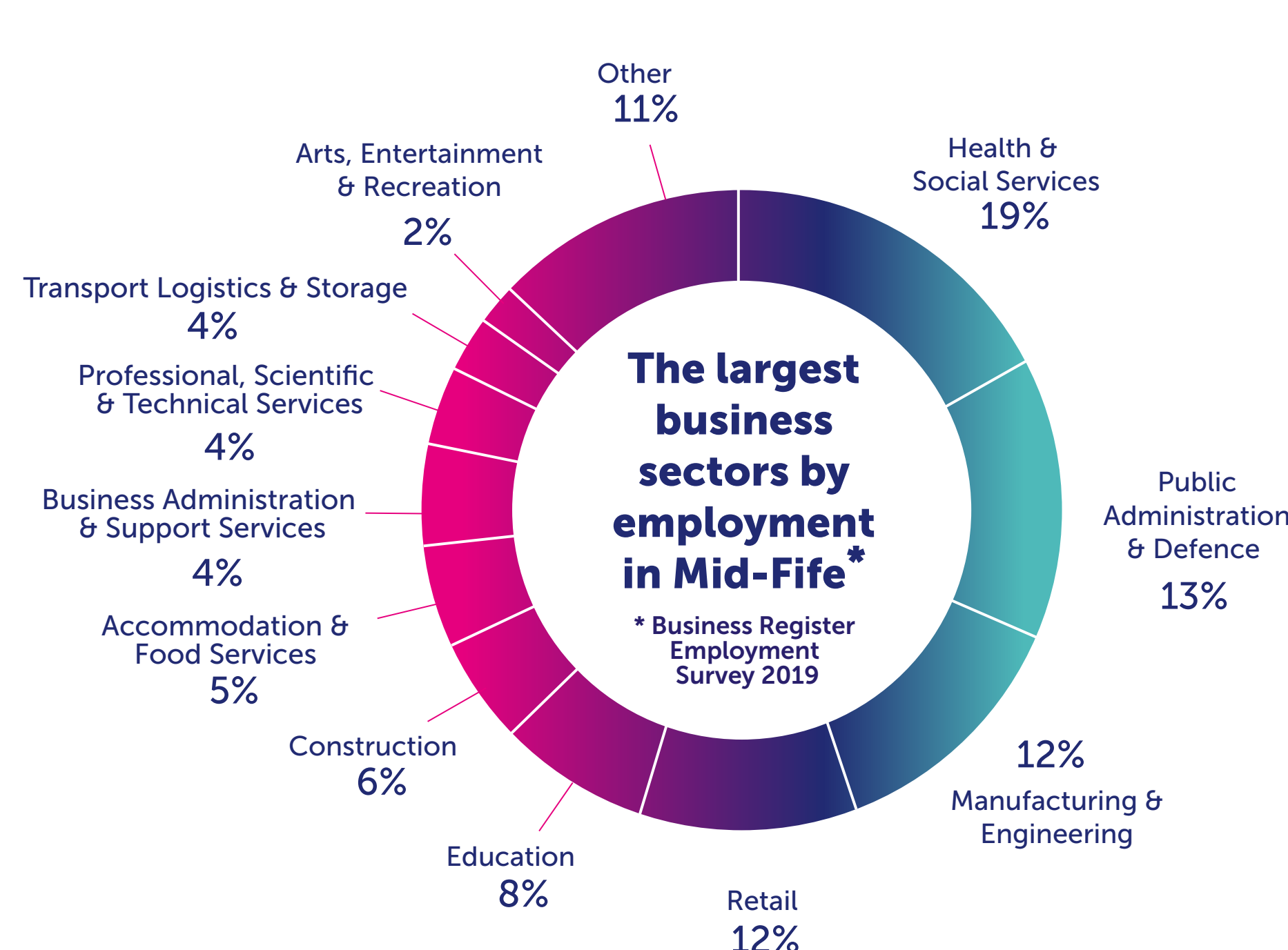


4,840
REGISTERED BUSINESSES

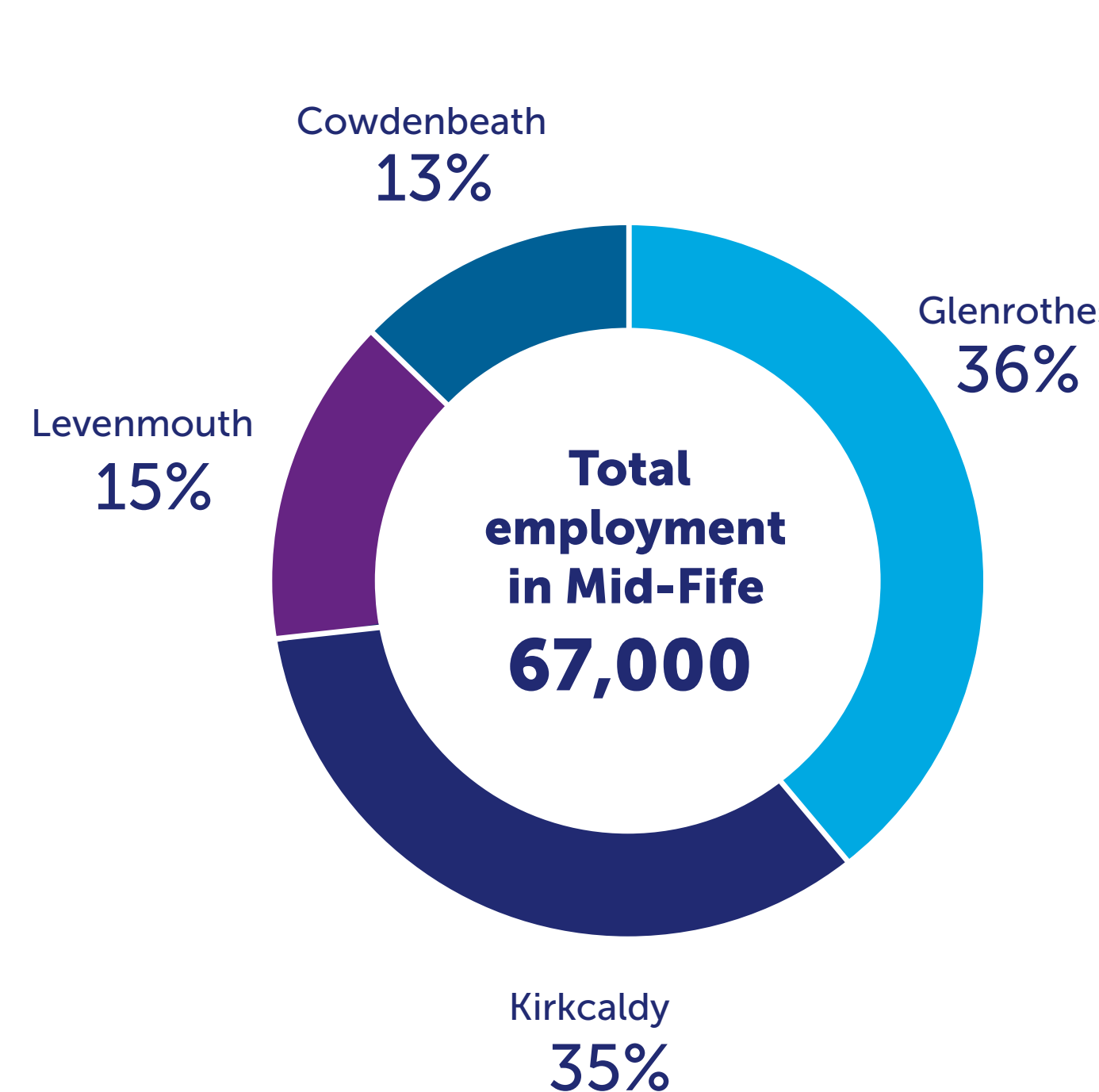


67,000
JOBS SUPPORTED BY BUSINESS

The largest business sectors by employment in Mid-Fife*



Employment in Mid-Fife



New Business start-ups supported in Mid-Fife

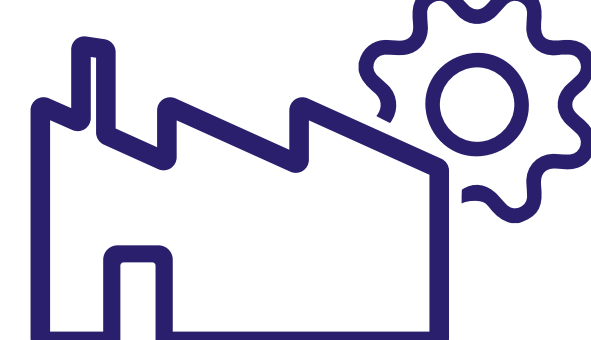
Figures for 2021-2022 show that **55.4%** of business start-ups supported by the Fife Business Gateway team were located in Mid Fife; with a total of **334** new businesses creating **429** jobs and a turnover of **£9.7m**.

Sectors



ENERGY INDUSTRIES

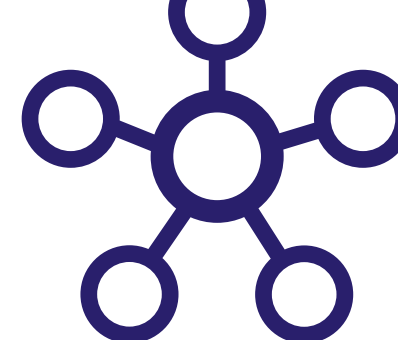
Energy Park Fife is home to the world's first green hydrogen-to-home project, **H100 Fife**



MANUFACTURING & ENGINEERING

62.5% of Fife's Manufacturing & Engineering companies are located in Mid Fife*

*ONS UK Business Counts 2022; defining 'Mid Fife' as the areas covered by Cowdenbeath, Kirkcaldy & Mid Fife, & Glenrothes Scottish Parliamentary Constituency Areas.



FINANCIAL & BUSINESS SERVICES

44% of jobs in the Financial & Business Services sector are located in Mid Fife*

*According to the ONS BRES 2020 stats and defining 'Mid Fife' as the areas covered by Cowdenbeath, Kirkcaldy & Mid Fife, & Glenrothes Scottish Parliamentary Constituency Areas.



TOURISM

Within Mid-Fife region Tourism related jobs account for **5%** of total employment



FOOD & DRINK

Over **70%** of Fife's jobs in the manufacture of food and drink are located in Mid Fife*

*According to the ONS BRES 2020 stats and defining 'Mid Fife' as the areas covered by Cowdenbeath, Kirkcaldy & Mid Fife, & Glenrothes Scottish Parliamentary Constituency Areas.

Education

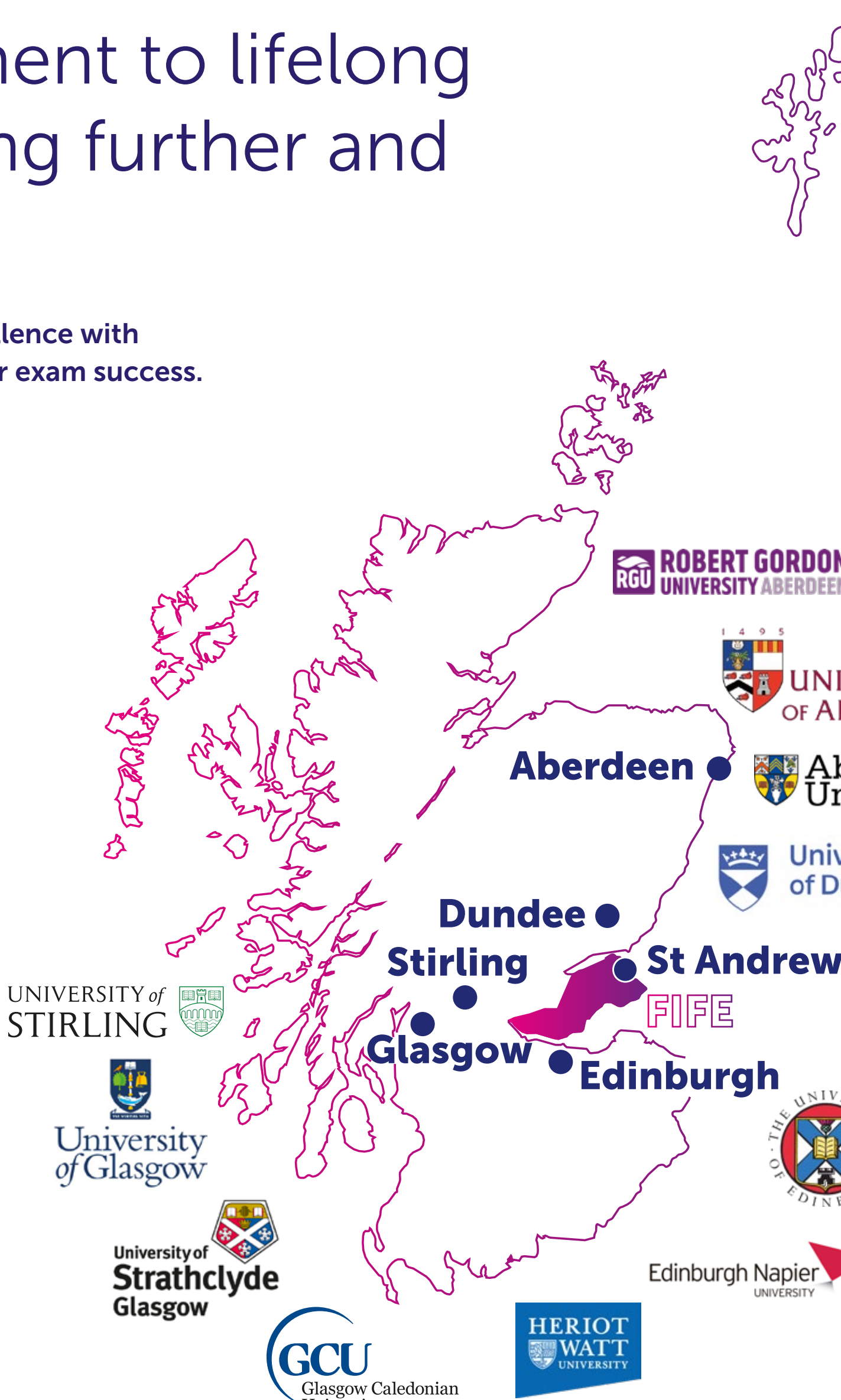
Fife has a clear commitment to lifelong learning and to developing further and higher education.

Fife has more than 200 schools united in their pursuit of excellence with several Fife schools performing above the national average for exam success.

The UK University rankings

University of St Andrews	4
University of Edinburgh	12
University of Glasgow	23
University of Strathclyde	32
Heriot Watt University	34
University of Aberdeen	37
University of Dundee	49
University of Stirling	50
Glasgow Caledonian University	88
Edinburgh Napier University	97
Robert Gordon University	103
University of Abertay Dundee	108

Source: University Rankings and League Tables 2023 (thecompleteuniversityguide.co.uk)



1776
PEOPLE STUDYING FOR A MODERN APPRENTICESHIP IN FIFE*

*Figures according to Skills Development Scotland 2021-2022



10,425
STUDENTS AT UNIVERSITY OF ST ANDREWS FOR ACADEMIC YEAR 2021/22



24,000
STUDENTS AT FIFE COLLEGE



8
WORLD CLASS UNIVERSITIES WITHIN AN HOUR'S DRIVE

Skills & Talents

Upskilling and reskilling our workforce by building on existing work and initiatives to create skills programmes targeted to support the needs of the Mid-Fife area.

APPRENTICESHIPS.SCOT
From Skills Development Scotland

Fife College

Opportunities Fife
connecting learning, skills and jobs

SRUC



Lifestyle

Fife is known worldwide as the Home of Golf, with Mid Fife offering a choice of 20 golf courses, all within easy reach of the iconic Old Course at St Andrews.



Fife has over 300 miles of cycleways



Lochore Meadows Country Park offers over 1,200 acres to explore



Fife Coastal Path and the Pilgrim's Way, both have significant stretches through Mid-Fife

Mid-Fife offers a choice of 20 golf courses