



# Business development support in Fife

Economic Development Team



**Fife means business**

# Contents

INVEST FIFE	3
A REGION TO GROW	4
CONNECTIVITY TO THE REST OF THE WORLD	6
SKILLED WORKFORCE	8
MODERN BUSINESS INFRASTRUCTURE	10
BUSINESS SUPPORT AND PARTNERS	12

# Invest Fife

**Fife Council has an integrated Planning and Economic Development team who are committed to providing a flexible approach to your needs – whether you have a new investment project, or you are planning to grow your business in Fife.**

Our team ethos and what drives our services to you is our commitment in making “Fife the best place to do business”.

We are dedicated to developing a team approach to every enquiry that comes in to us no matter what size or scope of your proposition. We will work with you beyond the investment journey so that your business grows and succeeds in Fife.

**Our supportive, experienced and well-connected team can:**

- Provide a designated case officer as a single point of contact
- Support to develop major planning applications to provide greater certainty for applicants in terms of the process and timescales.
- Facilitate access to finance, grants and both local and national incentives
- Offer relocation advice and tours (virtual tours will be available soon)
- Help to find the best space for your business, be it offices, co-workspaces/ Hubs, industrial and bespoke builds
- Assist with information on new developments and planning proposals
- Access to Opportunities Fife team who will provide support to recruit and retain the best talent
- Provide transportation liaison with public transport providers to establish new services
- Facilitate new connections and introduce you to sector networks



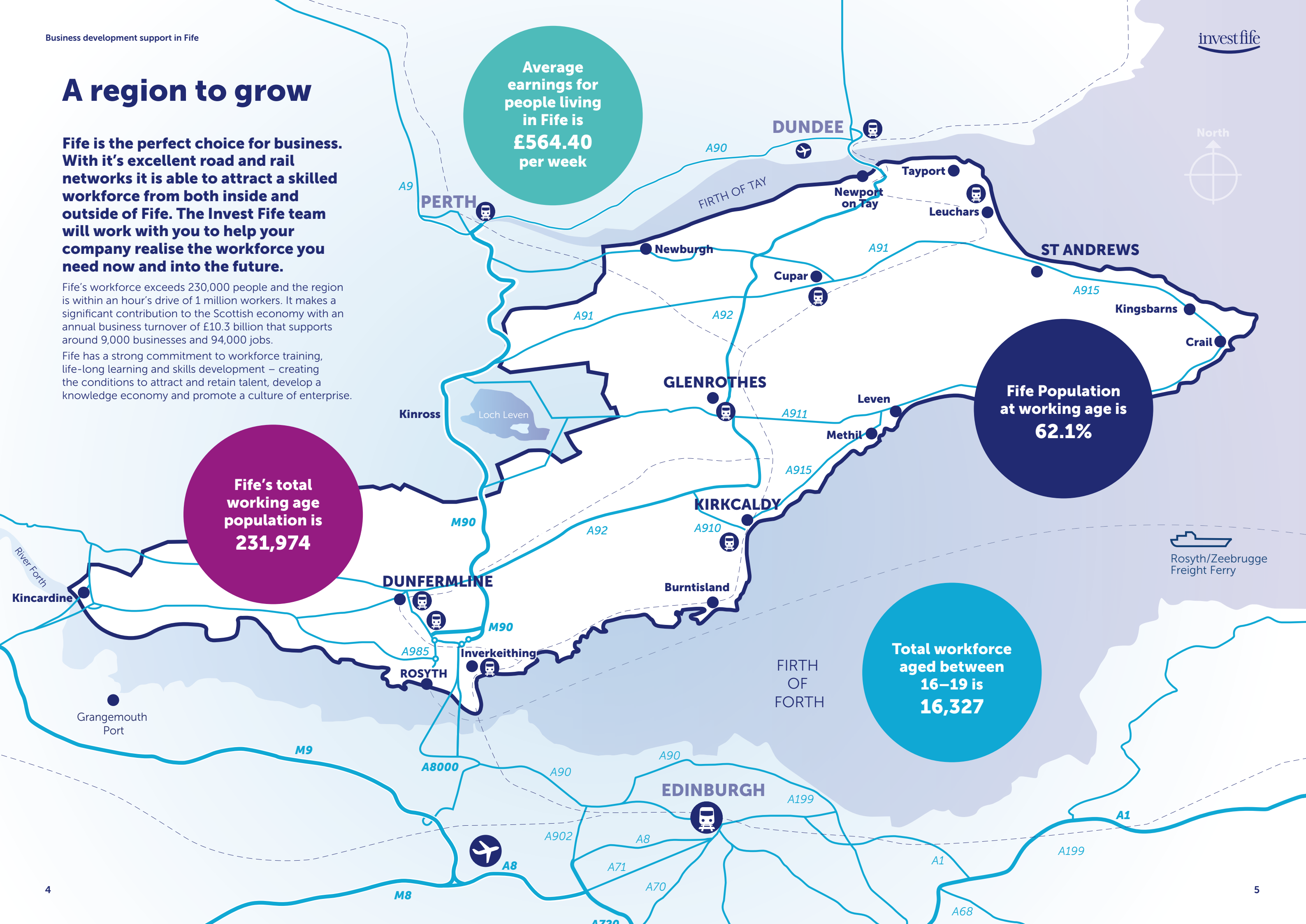
#fifemeansbusiness

# A region to grow

**Fife is the perfect choice for business. With it's excellent road and rail networks it is able to attract a skilled workforce from both inside and outside of Fife. The Invest Fife team will work with you to help your company realise the workforce you need now and into the future.**

Fife's workforce exceeds 230,000 people and the region is within an hour's drive of 1 million workers. It makes a significant contribution to the Scottish economy with an annual business turnover of £10.3 billion that supports around 9,000 businesses and 94,000 jobs.

Fife has a strong commitment to workforce training, life-long learning and skills development – creating the conditions to attract and retain talent, develop a knowledge economy and promote a culture of enterprise.



Average earnings for people living in Fife is **£564.40** per week

Fife's total working age population is **231,974**

Fife Population at working age is **62.1%**

Total workforce aged between 16-19 is **16,327**



# Connectivity to the rest of the world

Our transport links via road, rail and even sea enable businesses of all types to use Fife as a base.

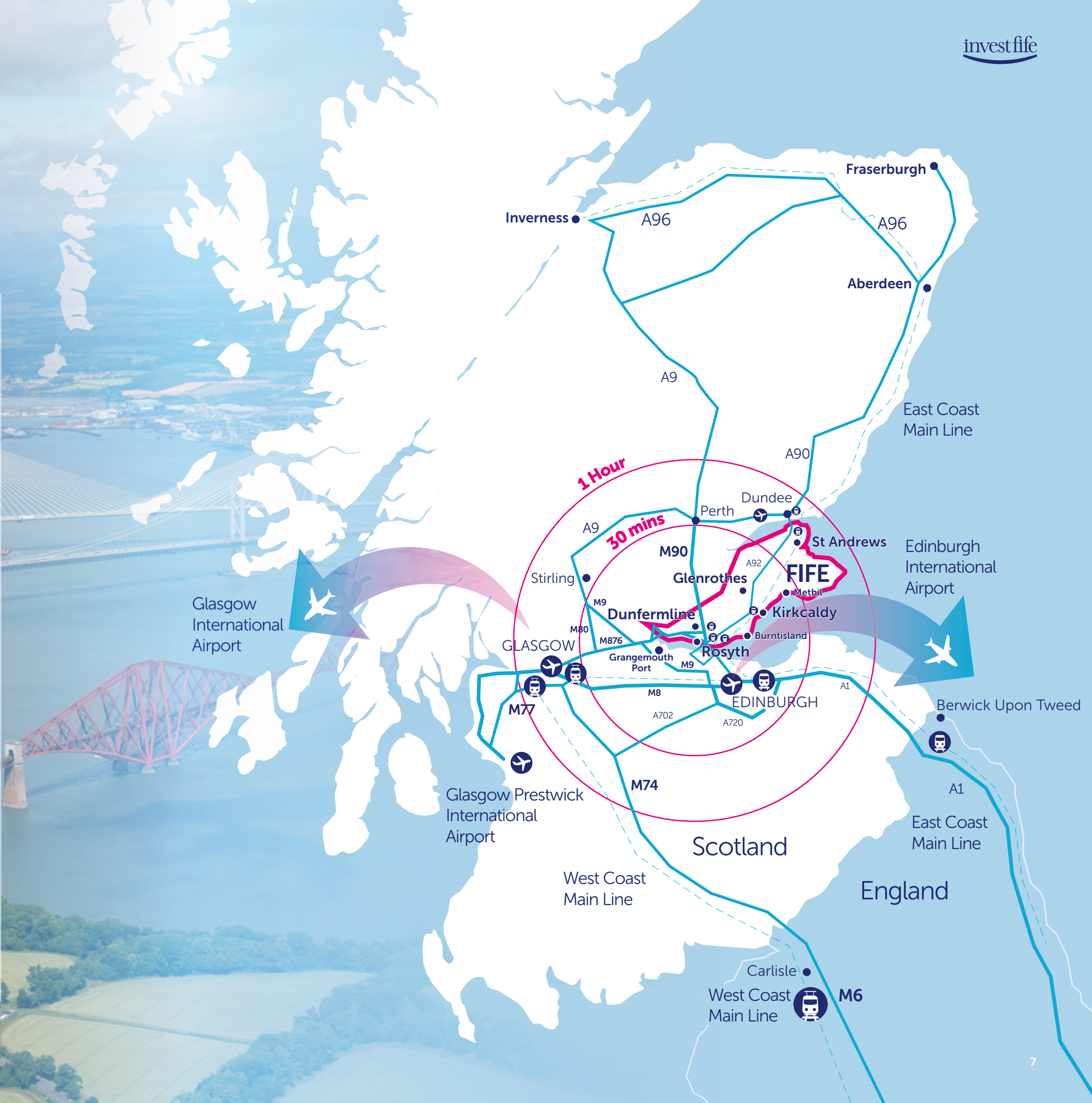
ROAD	
Edinburgh	45 Minutes
Dundee	45 minutes
Stirling	55 Minutes
Perth	35 Minutes
Glasgow	1 hour

**MOTORWAYS**  
South & west: M90, M8, M73, M74, M6, A1M & M1  
North: M90

**AIR**  
**Airport connections from Edinburgh**  
20 direct UK destinations  
87 International including US and Middle East  
46 flights per day to London

**RAIL**  
Main East Coast Rail link  
Fife Circle – Edinburgh  
Main West Coast Rail link  
Freight links

**PORTS**  
Rosyth Deep Water Port  
Grangemouth Docks  
Kirkcaldy  
Methil  
Burntisland





# A skilled workforce

**Fife is the perfect choice for businesses attracted by proximity, first-class business propositions, a capable workforce and lower costs.**

Companies locating in Fife can benefit from recruitment, selection and training support through Fife Council's Opportunities Fife and Employability Team.

The region has a strong commitment to workforce training, life-long learning and skills development – creating the conditions to attract and retain talent, develop a knowledge economy and promote a culture of enterprise.

**Developing the Young Workforce**

The aim of Developing the Young Workforce is to create a rich variety of high quality learning opportunities, linked to skills needs and employer demand, enabling young people to be informed and empowered to make smart decisions about the best route to work for them.

**For more information email:**  
[dyw.fife@fife.gov.uk](mailto:dyw.fife@fife.gov.uk)

**University of St Andrews**

University of St Andrews' world class research finds applications in a wide range of organisations. This can be assisting in economic development, advice on policy issues, or various forms of cultural engagement. Staff and students are encouraged to develop their research for possible commercial exploitation, and some staff offer consultancy based on their research. The university provides means by which inventions and copyrightable materials may be developed for application, patented, and utilised.

**For more information email:**  
[ktcdesk@st-andrews.ac.uk](mailto:ktcdesk@st-andrews.ac.uk)

**Fife College**

Fife College boasts first-class facilities, expert teaching and a wide range of courses suited to the needs of local and national industry. With five campuses across the region and a host of local learning centres the College is within easy reach of the Fife community making learning even more accessible than ever before. Fife

College delivers over 1,000 education and training courses for over 22,000 students studying at a range of levels from introductory and access programmes, through craft and intermediate levels to higher diplomas, degrees and post-graduate studies.

**For more information visit [www.fife.ac.uk](http://www.fife.ac.uk)**

**Scotland's Rural College**

Scotland's Rural College (SRUC) is a specialist horticultural and agricultural institution. Based at the Elmwood Campus in Cupar, SRUC plays a national strategic role in serving the needs of the rural land based sector and more significantly has become the premier training provider to Scotland's growing golf industry and recognised as a Centre of Excellence in golf related studies.

**For more information visit: [www.sruc.ac.uk](http://www.sruc.ac.uk)**

**Opportunities Fife**

Opportunities Fife is a partnership between Fife Council, Skills Development Scotland, the Department for Work & Pensions, the voluntary sector, Fife College and NHS Fife and works with employers to deliver a cohesive employability service for Fife and develop the skill base for a thriving local economy.

Opportunities Fife can provide local employers with a single entry point and act as a gateway into accessing a whole range of services available to help you and your business. They will discuss your recruitment needs, develop tailored training solutions to meet the real skill needs of your business and match these to local individuals looking for work.

**Key benefits to your business are:**

- Tailored pre-recruitment training to match your skill requirements
- Access to recruitment services matching local people to local jobs
- Access to 'in-work training' to develop your workforce
- The opportunity to gain reputation benefits and raise your profile
- Increase your competitiveness and ability to win new contracts.
- For more information please visit the Opportunities Fife website.

**Fife has a clear commitment to lifelong learning and developing further and higher education.**

Fife College enjoys excellent links with industry and has a proud tradition of vocational and skills-based training and education.

Fife is also a home to Scotland's oldest university, The University of St Andrews, which attracts students and teachers from around the world. Its world-class reputation in teaching and research consistently place St Andrews top in Scotland and among the top five in the UK.

**The UK university rankings**

University of St Andrews	3
University of Edinburgh	16
University of Glasgow	18
University of Aberdeen	29
University of Dundee	31
University of Stirling	43
University of Abertay Dundee	103

Source: The Complete University Guide



**The Modern Apprenticeship achievement rate in Fife is 69%**

**£12.9Bn**  
Annual business turnover

**1 million**  
workers within an hours drive

**8**  
world class universities within an hour's drive

# Modern business infrastructure

## It's not just the location and the people that make Fife such a great place to invest, it's the help you'll receive too.

Whether you're looking for office space, need the inside track on what's happening in the region, or want to know how to tap into the best talent, we're here to help.

Invest Fife helps businesses to locate, expand and flourish here in Fife. We provide a range of support services for existing businesses and potential investors, making it easy to realise your ambitions for growth.

### Business Property

Fife Council's Business Property Team manages a portfolio of premises to lease containing almost 300 industrial and office premises at locations throughout Fife. We can also assist in a search for business property within Fife, with access to a comprehensive list of availability within Fife.

### Employment Land for Business

Fife Council maintains a portfolio of land which contributes to the available supply of employment land across Fife. The portfolio offers a range of quality sites in terms of location and size for office, manufacture, storage and distribution uses.

### Fife Council Market and Trade Development

Delivered by Fife Council's Economic Development team, the Market and Trade Development Programme offers a practical and effective way for Fife companies to easily participate in events and trade shows. We organise group stands and visits for major UK and international exhibitions and conferences including provision of a range of support services from advice and information to customised training programmes. As part of the Fife Economy Partnership in conjunction with Fife Council Economic Development, Fife Chamber of Commerce, Business Gateway Fife and Scottish Development International support and advice is available for businesses looking to consider trading in new markets, but also for those already exporting but wishing to improve current processes and expand further.

**For more information email:**  
**fifemeansbusiness@fife.gov.uk**



### Environmental Services

Environmental Services are responsible for public protection, food safety, trading standards and health and safety enforcement in a wide range of businesses. The service is committed to provide high quality advice and assistance to any new or existing business to enable them to comply with any relevant legislation including internet trading.

**For more information visit:** [www.fife.gov.uk](http://www.fife.gov.uk)  
**or by contacting 03451 55 00 22 or Health & Safety:** [advice@fife.gov.uk](mailto:advice@fife.gov.uk) OR [food.advice@fife.gov.uk](mailto:food.advice@fife.gov.uk)

### Planning

Fife Council's Planning team delivers a professional service to customers including processing of applications, breaches of planning and pre application advice.

**For more information email:**  
**[development.central@fife.gov.uk](mailto:development.central@fife.gov.uk),**  
**or contact 03451 55 11 22**

### Building Standards and Safety

Supports all applications to build and ensures they meet certain standards to make sure they are safe for people to use, save energy and provide facilities for people with disabilities.

**For more information email:**  
**[bss.info@fife.gov.uk](mailto:bss.info@fife.gov.uk), or contact 03451 55 11 22**

### Fife Trusted Trader Scheme

This scheme was launched in January 2011 and is led by Fife Council Trading Standards. It's a membership scheme which uses an online directory of local trades who have made a commitment to treat their customers fairly. Trusted Trader is designed to: help customers avoid rogue traders, help customers make a more informed choice when choosing a trader and promote good business practice.

To apply to become a part of the scheme or to search for a trusted trader visit:

**[www.fife.gov.uk/kb/docs/articles/business2/trading-standards/trusted-trader-scheme](http://www.fife.gov.uk/kb/docs/articles/business2/trading-standards/trusted-trader-scheme)**

### Enterprise Hub Fife

Designed to provide enterprising individuals, start-ups (with growth aspirations) and growing businesses, access to a unique facility which encourages collaboration, networking and business growth.

This flexible workspace situated in Glenrothes town centre offers modern, professional and affordable offices, together with modern events space, easily accessible co-working areas and private meeting rooms.

**For more information contact: 0800 254 5200 or email:** [enquiries@enterprisehubfife.co.uk](mailto:enquiries@enterprisehubfife.co.uk) **or visit** [www.enterprisehubfife.co.uk](http://www.enterprisehubfife.co.uk)





# Wider business support



## Scottish Enterprise

Scottish Enterprise is Scotland's national economic, enterprise, innovation and investment agency. Scottish Enterprise works with public and private sector partners to develop the business environment and deliver a range of dedicated support services locally, nationally and internationally.

**For more information visit:**  
[www.scottishenterprise.com](http://www.scottishenterprise.com)

## Scottish Development International (SDI)

SDI is an organisation which helps overseas businesses tap into Scotland's key strengths in knowledge, high level skills, technology and innovation and also helps Scottish companies do more business overseas and to promote Scotland as a good place to live and work. It is jointly operated by the Scottish Government and Scottish Enterprise.

**For more information visit:** [www.sdi.co.uk](http://www.sdi.co.uk)

## Business Gateway Fife

Business Gateway Fife is part of the integrated economic development team in Fife Council. Business skills workshops are available to help with the skills required to run a successful business. Expert Help for specific projects to achieve business recovery or growth ambitions is also available for businesses. Support to improve business productivity and profitability through staff training. Register for the monthly electronic newsletter.

**For more information email:** [success@bgfife.co.uk](mailto:success@bgfife.co.uk) **visit:** [www.businessgatewayfife.com](http://www.businessgatewayfife.com)

## The Prince's Trust Enterprise Programme

Aims to provide essential financial and professional support to young people in Fife aged 18-25 and 26-30 for those unemployed or working less than 16 hours per week, so that they can set up and run their own businesses.

**For more information visit:**  
[www.princes-trust.org.uk](http://www.princes-trust.org.uk)

## The Supplier Development Programme (SDP)

SDP is a consortium of Scotland's Local Authorities which aims to assist businesses in Fife to improve their performance in winning contracts with Scottish Public and Private Sector Organisations. SDP offers information, support, news, events and workshops covering procurement issues to help you unravel the tendering process.

**For more information contact:**  
[fifemeansbusiness@fife.gov.uk](mailto:fifemeansbusiness@fife.gov.uk)

## Business Loans Scotland

BLS is a consortium of Scotland's Local Authorities working together to provide loan finance up to £100,000 to new and growing businesses throughout Scotland.

**For more information visit:** [www.bls.scot](http://www.bls.scot),  
**contact** [fundmanager@bls.scot](mailto:fundmanager@bls.scot) **or call**  
**01592 858333**

## Financial Support to Businesses

Led by Business Gateway Fife on behalf of Fife Council Economic Development, Financial Support to Business can help with funding to encourage small companies in Fife to invest and grow their business. It can help with plant and machinery, property improvements, product development, process improvement, training and market development and your company may be eligible for assistance if you employ up to 50 people in manufacturing, business to business services or tourism.

**For more information contact a business adviser at Business Gateway Fife on 01592 858333 or email:** [success@bgfife.co.uk](mailto:success@bgfife.co.uk)

## Green Business Fife

A free environmental network that provides an integrated support mechanism to assist Fife businesses in realising resource efficiency gains, minimising their environmental impact and identifying new business opportunities.

**For more information visit:**  
[www.greenbusinessfife.co.uk](http://www.greenbusinessfife.co.uk)

## Fife Chamber of Commerce

Supports businesses of all sizes across the region. As a local, independent, organisation with a national voice (through its affiliation to Scottish and British Chambers of Commerce), it represents the interests of members and makes their views heard in the right places at local, national, UK and European levels. It provides a range of business services and information, and organises events to bring businesses together through an extensive programme of networking meetings, business seminars and training courses.

**For more information and local contact details visit:** [www.fifechamber.co.uk](http://www.fifechamber.co.uk)

## Centre for Engineering Education and Development (CEED)

CEED is a community of businesses and academics who have joined together to pool their talents, expertise, experience and resource in the pursuit of operational excellence. Their aim is to improve operational efficiency and effectiveness—that will impact the bottom line.

**For more information visit:**  
[www.ceed-scotland.com](http://www.ceed-scotland.com), **email:** [d.nicholson@ceed-scotland.com](mailto:d.nicholson@ceed-scotland.com), **or contact:** **07539 922495**

## The Federation of Small Businesses (FSB)

FSB is the business membership organisation in Fife with over 1400 members. As well as being a powerful lobbying group representing the interests of small businesses both locally and nationally, the FSB offers an unrivalled portfolio of benefits.

**For more information visit** [www.fsb.org.uk](http://www.fsb.org.uk) **or contact:** [garry.clark@fsb.org.uk](mailto:garry.clark@fsb.org.uk)

## Fife Tourism Partnership

The Fife Tourism Partnership has been set up to support the tourism industry in Fife. The Board members work with businesses across Fife to develop a joined up Fife Tourism Strategy. To register your business go to [www.FifeTourismPartnership.org](http://www.FifeTourismPartnership.org). Once registered you can then sign up to promote your business on the Fife consumer site: [www.WelcometoFife.com](http://www.WelcometoFife.com)

## Support for Social Enterprise

### Fife Voluntary Action

Supports new and existing third sector organisations that operate in Fife. They work with community groups, voluntary organisations, charities, social enterprises and individuals looking to set up a new organisation. FVA is able to help you to determine if the social enterprise route is right for you and your idea. There are many approaches, legal structures and benefits to consider, including disadvantages of certain models which should be considered before getting started. And, if social enterprise isn't a sustainable model or the right approach for you, we'll still help you to take it forward because we provide support across the whole of the third sector, not just social enterprises.

**For more information visit:**  
[www.fva.org/social\\_enterprise.asp](http://www.fva.org/social_enterprise.asp)





[www.investfife.co.uk](http://www.investfife.co.uk)  
[fifemeansbusiness@fife.gov.uk](mailto:fifemeansbusiness@fife.gov.uk)



**For more information contact:**

**Invest Fife  
Fife House  
North Street  
Glenrothes  
Fife  
KY7 5LT**



Invest Fife is an investment initiative supported by Fife Council and works in partnership with Scottish Enterprise and Scottish Development International.

**#fifemeansbusiness**