The background of the entire page is a photograph of hands building a wooden bar chart. The bars are made of light-colored wood and are arranged in a stepped fashion, increasing in height from left to right. A hand is visible on the right side, placing a wooden block on top of one of the bars. The image is overlaid with a gradient of magenta and blue colors.

# **Mid-Fife Economic Investment Prospectus**

Investing in the future, creating opportunity

April 2021

**#fifemeansbusiness**

# Contents

**Welcome to Fife**

**Mid-Fife profile**

**Mid-Fife investment priorities**



**Providing modern, high-quality business premises**



**Supporting innovation and supplier development**



**Skills development and progression:**  
Re-skilling & up-skilling our workforce



**Promoting a culture of enterprise**



**Local jobs and access to jobs:**  
Supporting people into employment



**Promoting place-based investment**

# Welcome to Fife

Located on the East of Scotland, Fife is perfectly placed to benefit from key transport links across Scotland, the UK and beyond.

The third largest local authority in Scotland and home to a population of around 370,000, Fife provides one of the most attractive locations in Scotland to live, work, visit and invest.



## Education & Skills

Fife has a clear commitment to lifelong learning and to developing further and higher education.

Fife is home to the University of St. Andrews and a further eight universities lie within an hour's drive. Fife also has excellent further education providers from state-of-the-art schools to outstanding colleges.

Businesses in Fife have ready access to graduate talent across all disciplines and ample opportunities for R&D collaboration with Scotland's top academic institutions.

Fife has more than 200 schools united in their pursuit of excellence with several Fife schools performing above the national average for exam success.

Fife is home to Scotland's first university, The University of St Andrews. Its world-class reputation in teaching and research consistently place St Andrews top in Scotland and among the top five in the UK, according to annual league tables produced by The Times, Sunday Times and The Guardian. The University of St Andrews is now firmly acknowledged as a leading multi-faculty alternative to Oxford and Cambridge and attracts students and teachers from around the world. Fife also benefits from its close proximity to the University of Edinburgh, Edinburgh Napier University, Heriot-Watt University, the University of Dundee and Abertay University.

### The Guardian: League Table of Best UK Universities 2021

2021	2020	Institution	Guardian score
1	3	Oxford	100
2	2	<b>St Andrews</b>	<b>98</b>
3	1	Cambridge	95.4
12	14	Glasgow	71
13	25	Edinburgh	70.9
15	51	Strathclyde	70
19	29	Dundee	68.4
28	34	Aberdeen	68.1
28	45	Stirling	65.6
35	61	Heriot Watt	63.2



Fife College is one of the largest colleges of higher and further education in Scotland with five main campuses located in Dunfermline, Glenrothes, Kirkcaldy, Leven, and Rosyth. The College offers over 400 courses, from essential skills to graduate degree programmes, in more than 40 difference subject areas, with 93% of Fife College students progressing on to either employment or further studies after completing their courses. Nearly 17,000 students currently study either full-time or part-time at the College with 50% of students aged above 25, and a quarter aged over 40.

The College's primary focus is skills development and providing learners with the opportunity to build their skills and abilities, supporting close collaboration and seamless pathways between schools, colleges, universities and employers.

Fife College works closely with over 800 employers to develop and deliver training across Fife to a wide range of sectors and their employers across Fife. The recent introduction of the government-funded programmes available to both small and large employers will provide over 390 places across 20 skills frameworks, ensuring the College is well-positioned to support the actions identified within the Mid-Fife Economic Investment Prospectus.

Fife College is currently developing a new state of the art campus at Halbeath in Dunfermline, with similar exciting ambitions to redevelop its Stenton campus in Glenrothes.

# Mid-Fife Profile

The Mid-Fife area of Fife extends from the M90 in the west through to the Firth of Forth coastline in the east and comprises the Cowdenbeath, Kirkcaldy, Glenrothes and Levenmouth local committee areas.

Mid-Fife is well-connected to the M90 via the A92 dual carriageway running east-west through the region and is also well-served by the Fife Circle rail network and East Coast Main Line providing onward links to Edinburgh and the south; Dundee, Aberdeen and the north; and Glasgow to the west.

The recent Scottish Government announcement about the reinstatement of the Levenmouth rail link, due for completion by 2023, has provided a major boost to Mid-Fife and is accompanied by further funding from the government and Fife Council to enhance the area's economic prospects.



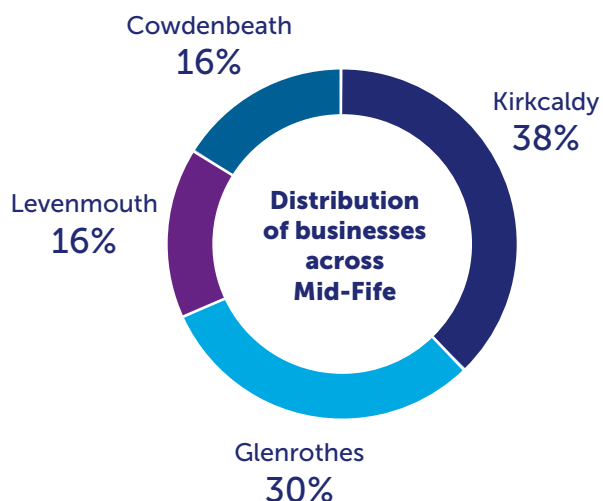
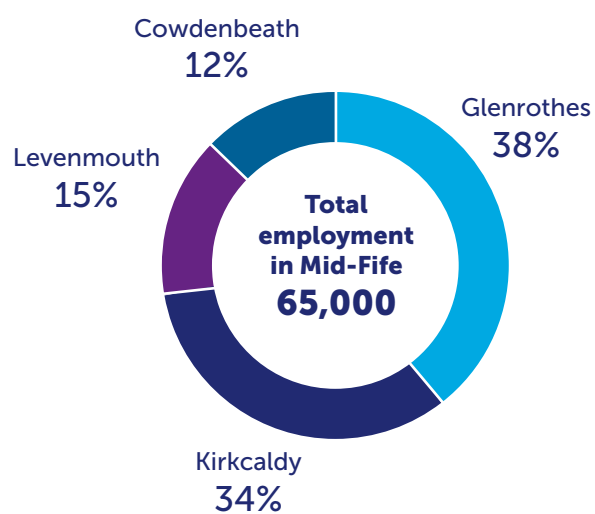
## Businesses

There are almost 10,000 registered businesses in Mid-Fife<sup>1</sup>, of which around 3,900 are VAT and PAYE-registered<sup>2</sup>.

Figures for 2019-20 show that **61%** of business start-ups supported by the Fife Business Gateway team were located in Mid-Fife; with a total of **319** new businesses creating **430** jobs and a turnover of **£8.713m**.

Figures for 2019 show that the business start-up rate in Fife was higher than the rate for Scotland; with the 3-year survival rate for business start-ups in Fife (59.2%) also above the Scottish average (56.5%)<sup>3</sup>.

In 2019/20, Fife had 845 companies registered with the Supplier Development Programme (SDP), 153 (22%) more than the previous year. Each year there are around 120 SDP events; in 2019/20, 77% of businesses attending events were from Mid-Fife. In terms of inward investment and business growth, Mid-Fife offers a good supply of land zoned for industrial development, including a number of serviced sites, that is available at attractive rates in comparison with competitor locations.

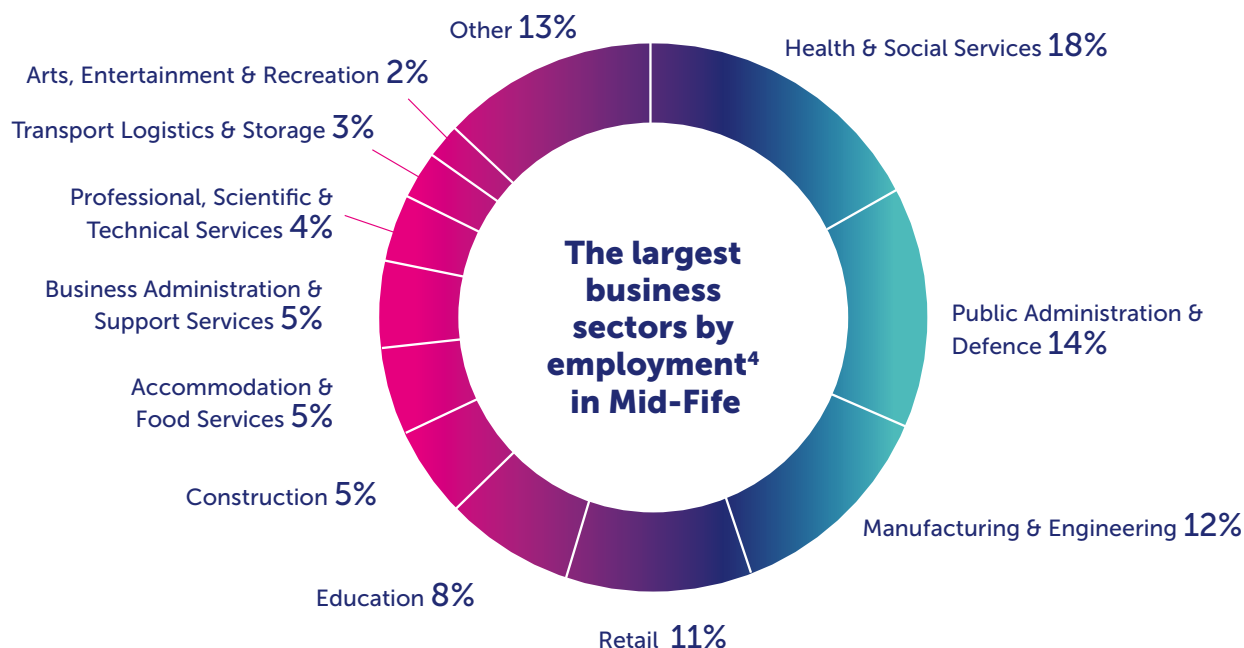


<sup>1</sup> FAME database of Registered Trading Address and/or Primary Trading Address (2019)

<sup>2</sup> UK Business Counts 2019

<sup>3</sup> Business Demography, UK: 2019, Office for National Statistics





## Manufacturing & Engineering in Mid-Fife

Fife has a long history of being at the leading edge of manufacturing and engineering, with Mid-Fife providing the base for a cluster of major businesses offering expertise in fabrication, agile manufacturing and rapid manufacturing services along with civil, mechanical and electrical engineering specialisms.

**Fife Fabrications**, based in Glenrothes, is one of the most advanced manufacturers of precision sheet metalwork, electromechanical assemblies, and precision machined components in the UK, offering a complete service from design for manufacture support to manufacturing and full customer delivery.

**SipsEco** is Scotland's largest Structural Insulated Panel (SIPs) home manufacturer. It designs, engineers, manufactures and constructs low carbon, energy efficient homes for developers, contractors, local authorities and self-builders, as well as providing energy efficient structures for schools and healthcare facilities across the UK. The company has been based in Glenrothes for over 20 years and was recognised with the award for Best Sips Supplier in the UK in 2020.

**Forbo Flooring** in Kirkcaldy is the only UK manufacturer of linoleum floor coverings and tiles, with production at the site dating back over 140 years. The environmentally-friendly raw material used in production and its natural ability to inhibit the growth of bacteria has made Forbo Marmoleum a contemporary, sustainable and durable flooring solution for healthcare, education, retail, commercial offices and private rental sectors.

## Renewables/Oil & Gas Decommissioning

### Energy Park Fife

Energy Park Fife in Methil is a world-leading engineering and research zone servicing the energy and renewables sector. The location encompasses a **55-hectare** engineering site ideally suited for a range of marine energy activities, including manufacturing, fabrication and engineering, research & development and operations & maintenance. The park is also home to the Hydrogen Office, the ORE Catapult Wind Turbine research facility (the world's most advanced, open access, offshore wind turbine) along with one of the UK's most advanced decommissioning facilities. CessCon Decom has recently secured the largest oil and gas decommissioning contract in Scotland to date, which will involve processing over **23,000 tonnes** of material from Spirit Energy's Morecambe Bay DP3 and DP4 facilities in the East Irish Sea at the Energy Park Fife Decommissioning Facility. In another positive development for the area, the former BiFab fabrication site in Methil has been acquired by London-based InfraStrata to operate under the Harland & Wolff brand name.



*The Hydrogen Office*



*ORE Catapult  
Wind Turbine*

**Energy Park Fife,  
world-leading engineering  
and research zone**

## Tourism

Tourism accounts for around 5% of employment within the Mid-Fife region and a new 'Heartlands of Fife' brand aligned to the overall Welcome to Fife branding aims to further improve awareness of Mid-Fife as a destination for tourism and active leisure.

Fife is known worldwide as the Home of Golf, with Mid-Fife offering a choice of 20 courses, all within easy reach of the iconic Old Course at St Andrews.

The hugely popular 183km Fife Coastal Path long-distance walking route has been joined by the new 104km Fife Pilgrim's Way, both of which have significant stretches through Mid-Fife.

The area is home to Scotland's first augmented reality trail, the award-winning In The Footsteps of Kings, and Lochore Meadows Country Park offers over 1,200 acres to explore, with a beautiful loch, upgraded visitor centre and wide range of leisure and recreational activities.

Fife has over 300 miles of cycleways across the Kingdom and the Fife Cycle Park at Lochgelly, opened in 2018, is the first of its kind in Scotland. The region also has a number of attractive parks, including Beveridge Park and Ravenscraig Park in Kirkcaldy and Silverburn Park in Leven.



*Fife Pilgrim Way*

**Tourism accounts for around 5% of employment within the Mid-Fife region**



*Lochore Meadows Country Park*



*Fife Cycle Park at Lochgelly*

**Fife has over 300 miles of cycleways across the Kingdom**



## Key Town Centres

Investment in key town centres saw Lochgelly recognised as 'Scotland's Most Improved Town' at the 2016 Scotland's Urban Regeneration Forum (SURF) Awards in recognition of a series of ambitious and collaborative initiatives to enhance its physical appearance, pride of place, and reputation.

Similar improvements in Cowdenbeath resulted in it being shortlisted in the Rising Star category of the Great British High Street Awards 2019.

In Kirkcaldy, the second phase of improvements to the Waterfront aim to further improve public space and connections with the High Street, while gap site developments and associated incentives aim to increase town centre living.

A new Glenrothes town centre masterplan has recently been approved by the Council which focusses on key development sites and improved green corridor links with Riverside Park.

These initiatives demonstrate Fife's ongoing commitment to investment in, and re-purposing of, key town centres within Mid-Fife.

### Levenmouth

The announcement of the £70m Levenmouth rail link reinstatement by the Scottish Government in August 2019 has provided a major boost for the area. Preparatory work is already underway on site ahead of major construction working commencing in 2022 with anticipated completion in 2023.

In addition to the rail link investment itself, a further £10m has been jointly committed by the Scottish Government and Fife Council to support the development of a Levenmouth Reconnected blueprint that aims to maximise the economic impact of the rail link for the wider area.

Sitting alongside this work is another unique opportunity for the area. The Leven Programme was established in 2018 and is a regeneration initiative that firmly puts the environment and people at its heart. The programme brings together government agencies, non-government organisations, private sector businesses and local communities who want to breathe life back into the River Leven and improve the areas surrounding it, making them great places to live, work and visit.

It is anticipated that the Leven Programme will take around 10 years to deliver via a series of smaller individual projects. Reconnecting people and place is a key theme of the programme and the first project, the Connectivity Project, will focus on improving a 5km stretch of the river from Levenmouth to Cameron Bridge with the aim of creating an exemplar river park and network of paths that connect isolated communities to one another, as well as to jobs, training, town centres, leisure and health opportunities.



Cowdenbeath town centre

**These awards demonstrate Fife's ongoing commitment to investment**



Scottish Government  
Transport Secretary,  
Michael Matheson,  
announcing  
Levenmouth Rail Link  
August 2019



River Leven Burn  
Mill Weir

# Mid-Fife Investment Priorities

Investing in the  
future, creating  
opportunity

# Mid-Fife Investment Priorities

A recent independent appraisal of the Mid-Fife economy identified a set of proposed actions aimed at supporting place-based inclusive growth in the four local committee areas and Mid-Fife as a whole.

These proposals have been reviewed within the context of the economic impact of the Covid-19 pandemic and six key themes identified as priorities for investment in Mid-Fife, as shown in the diagram below:



The following sections of the prospectus identify the range of projects currently identified to support the delivery of the six priorities. Given the ongoing economic uncertainties associated with the impact of Covid-19, this framework of projects will continue to be reviewed and refined as appropriate to reflect both economic conditions and available opportunities.



# Providing Modern, High Quality Business Premises

Working in partnership with key stakeholders, our aim is to promote the development of an appropriate range of high-quality modern business premises at key locations across Mid-Fife.

Designed to address post-Covid requirements, meet the needs of growing Mid-Fife companies, and attract new high-growth businesses to the area, these new facilities will support high-speed digital connectivity, encourage innovation clusters and, where appropriate, include on-site support to help businesses start-up and grow.

## LEGEND: Mid-Fife Investment Priorities

- 1** Providing modern, high-quality business premises
- 3** Skills development & progression; re-skilling & up-skilling our workforce
- 5** Local jobs & access to jobs; Supporting people into employment
- 2** Supporting innovation & supplier development
- 4** Promoting a culture of enterprise
- 6** Promoting place-based investment

## FIRST PHASE PROPOSALS

Contribution To Mid-Fife Priorities						Project/Description	Area	Status
1	2	3	4	5	6	<b>Queensway Industrial Estate: Flemington Rd</b> Construction of 9 new business units on Flemington Road.	GLN	Completed
1	2	3	4	5	6	<b>Dunnikier Business Park</b> Construction of 7 new business units and site servicing of further land.	KDY	In Progress

## SECOND PHASE PROPOSALS

Contribution To Mid-Fife Priorities						Project/Description	Area	Status
1	2	3	4	5	6	<b>Lochgelly Industrial Park: The Avenue</b> Site servicing of 2ha site for private development business units.	CWD	Detailed Proposals
1	2	3	4	5	6	<b>Queensway Industrial Estate: Refurbishment</b> Refurbishment & conversion of warehouse to terrace of small business units.	GLN	Detailed Proposals
1	2	3	4	5	6	<b>Fife Food &amp; Business Centre: Unit 18/19</b> Refurbishment of unit 18/19.	GLN	Detailed Proposals
1	2	3	4	5	6	<b>Fife Food &amp; Business Centre: Units 22-25</b> Refurbishment to reconfigure one unit into four units.	GLN	Detailed Proposals
1	2	3	4	5	6	<b>John Smith Business Park: Iona House</b> Refurbishment of ground and first floors of Iona House to bring office space up to marketable condition.	KDY	Detailed Proposals
1	2	3	4	5	6	<b>Mountfleurie Industrial Estate, Leven</b> Site remediation to support extension of industrial estate.	LVN	Detailed Proposals



## THIRD PHASE PROPOSALS

Contribution To Mid-Fife Priorities						Project/Description	Area	Status
1	2	3	4	5	6	<b>Fife Food &amp; Business Centre</b> New-build 10,000 sq.ft at Southfield Industrial Estate to create 1,000-2,500 sq.ft business units on land in FC ownership.	GLN	Outline Proposition
1	2	3	4	5	6	<b>Westwood Park</b> Re-development for mixed-use residential and employment use including £1.2m developer contribution towards site-servicing of retained 10 acre Class 4 employment land.	GLN	Outline Proposition
1	2	3	4	5	6	<b>John Smith Business Park</b> New-build construction on serviced site immediately east of Spiral Weave pub/restaurant.	KDY	Outline Proposition
1	2	3	4	5	6	<b>John Smith Business Park</b> Possible development of additional floor space at JSBP (new build or refurbishment) in the event of underspend elsewhere.	KDY	Outline Proposition
1	2	3	4	5	6	<b>John Smith Business Park: Land Use Strategy</b> Review of land use strategy with a view to securing further investment in site servicing for Class 4 employment land.	KDY	Outline Proposition
1	2	3	4	5	6	<b>Smeaton Industrial Estate</b> Potential site acquisition and remediation of vacant former waste transfer site.	KDY	Outline Proposition
1	2	3	4	5	6	<b>Levenmouth Business Park</b> Site servicing & construction of 10 business units.	LVN	Outline Proposition
1	2	3	4	5	6	<b>Levenmouth Business Park (formerly Muiredge Ind. Estate)</b> Site decontamination, clearance & servicing of land to enable construction of new business units.	LVN	Outline Proposition
1	2	3	4	5	6	<b>Sandybrae Industrial Estate, Kennoway</b> Refurbishment of existing and construction of new units.	LVN	Outline Proposition

## LEGEND: Mid-Fife Investment Priorities

- |                                                           |                                                                                    |                                                                         |
|-----------------------------------------------------------|------------------------------------------------------------------------------------|-------------------------------------------------------------------------|
| <b>1</b> Providing modern, high-quality business premises | <b>3</b> Skills development & progression; re-skilling & up-skilling our workforce | <b>5</b> Local jobs & access to jobs; Supporting people into employment |
| <b>2</b> Supporting innovation & supplier development     | <b>4</b> Promoting a culture of enterprise                                         | <b>6</b> Promoting place-based investment                               |

# Supporting Innovation & Supplier Development

Promoting high-end business and innovation support which increases the links into Higher Education (College Higher Education, Universities and Research Institutes) and, in particular, R&D / innovation support.

Encouraging and supporting digital and data-driven innovation (DDI). Working with partner agencies and other key stakeholders to promote awareness of supply chain opportunities and support the development of supplier capabilities and capacity in Fife, including the adoption of Community Wealth Building principles to boost the local economy.

## FIRST PHASE PROPOSALS

Contribution To Mid-Fife Priorities	Project/Description	Area	Status
1 2 3 4 5 6	<b>Fife Supplier Development Programme</b> Encouraging SMEs to register with the national SDP and attend events and training,	FIFE	In Progress
1 2 3 4 5 6	<b>Talgo UK Supply Chain Opportunities</b> Promoting supply chain opportunities arising from the proposed Talgo UK rolling stock manufacturing plant at, Kincardine.	FIFE	In Progress
1 2 3 4 5 6	<b>Procurement Expert Help / 1-2-1 Surgeries/Meet the Buyer Events</b> Encouraging SME participation in events organised by Business Gateway Fife to help businesses access contract opportunities	FIFE	In Progress

## SECOND PHASE PROPOSALS

Contribution To Mid-Fife Priorities	Project / Description	Area	Status
1 2 3 4 5 6	<b>CessCon Decom Supply Chain Opportunities</b> Promoting supply chain opportunities associated with CessCon Decom oil & gas decommissioning facility at Energy Park Fife.	FIFE	Detailed Proposals
1 2 3 4 5 6	<b>Harland &amp; Wolff Supply Chain Opportunities</b> Promoting supply chain opportunities associated with the Harland & Wolff acquisition of the former BiFab fabrication site at Methil.	FIFE	Detailed Proposals
1 2 3 4 5 6	<b>SGN H100 Fife Hydrogen Project Supply Chain Opportunities</b> Promoting supply chain opportunities associated with the SGN H100 Fife Hydrogen Demonstration Project in Levenmouth.	FIFE	Detailed Proposals

## THIRD PHASE PROPOSALS

Contribution To Mid-Fife Priorities	Project / Description	Area	Status
1 2 3 4 5 6	<b>Community Wealth Building</b> Promote the adoption of a more robust approach to Community Wealth Building in Fife to underpin economic recovery and growth within the local economy.	FIFE	Outline Proposition
1 2 3 4 5 6	<b>Digital Twins Town Modelling</b> Possible Fife Council / University of St Andrews project to create 'digital twins' of Kirkcaldy and Levenmouth for scenario modelling.	KDY LVN	Outline Proposition

# Skills Development & Progression

Up-skilling & re-skilling our workforce by building on existing work and initiatives to create skills programmes targeted to supporting the needs of the Mid-Fife area.

Responding effectively to mitigate the economic impact of the Covid-19 pandemic on local businesses, jobs and those entering the workforce.

Supporting the policy direction set by the Scottish Government and UK Government to support business resilience, sustainability and recovery.

Providing support to those who have lost their jobs, or at risk of losing their jobs, and those at greatest disadvantage struggling to find employment.

Helping existing businesses up-skill and/or re-skill existing employees to address new challenges and support growth and innovation.

Promoting opportunities for young people joining the workforce and supporting women returning to the workforce.

Improving digital and data skills to support the needs of business.

Increasing the availability of modern, foundation and graduate apprenticeships in Fife and positive destinations for school leavers.

## LEGEND: Mid-Fife Investment Priorities

- |                                                           |                                                                                    |                                                                         |
|-----------------------------------------------------------|------------------------------------------------------------------------------------|-------------------------------------------------------------------------|
| <b>1</b> Providing modern, high-quality business premises | <b>3</b> Skills development & progression; re-skilling & up-skilling our workforce | <b>5</b> Local jobs & access to jobs; Supporting people into employment |
| <b>2</b> Supporting innovation & supplier development     | <b>4</b> Promoting a culture of enterprise                                         | <b>6</b> Promoting place-based investment                               |

## FIRST PHASE PROPOSALS

Contribution To Mid-Fife Priorities	Project / Description	Area	Status
1 2 3 4 5 6	<b>Edinburgh &amp; SE Scotland City Region Deal Skills Gateway</b> Promote awareness of and access to Data Driven Innovation (DDI) and Housing Construction & Innovation (HCI) Skills Gateways to provide progression routes into DDI, construction and low carbon careers.	FIFE	In Progress
1 2 3 4 5 6	<b>Modern, Foundation and Graduate Apprenticeships</b> Increase the awareness of and support access to modern foundation and graduate apprenticeships amongst school pupils and leavers and encourage businesses to offer apprenticeships.	FIFE	In Progress
1 2 3 4 5 6	<b>Scottish Government Flexible Workforce Development Fund</b> Encourage SMEs and Apprenticeship Levy paying employers to apply for support from the Flexible Workforce Development Fund to help increase productivity and address workforce skills gaps.	FIFE	In Progress

## SECOND PHASE PROPOSALS

Contribution To Mid-Fife Priorities						Project/Description	Area	Status
1	2	3	4	5	6	<b>Dunfermline Learning Campus, Halbeath</b> Development of Dunfermline Learning Campus accommodating new Fife College building and replacement schools for Woodmill High School and St Columba's RC High School.	FIFE	Detailed Proposals
1	2	3	4	5	6	<b>Accelerated HNC Programme 2021/22 Academic Year</b> Development / implementation of accelerated HNC courses in Social Services; Cyber Security; Business; Fabrication, Welding & Inspection.	FIFE	Detailed Proposals
1	2	3	4	5	6	<b>Data Driven Innovation Programme 2021/22 Academic Year</b> NPA Data Science for Football Studies Level 4 (Aug-Dec) NPA Data Science for Finance (Women Returners) Level 4 (Jan-Apr) NPA Data Science for Finance (Into Work) Level 4 (Jan-Apr) Data Citizenship Level 4 (Care) Data Science Level 4 (Care)	FIFE	Detailed Proposals
1	2	3	4	5	6	<b>Skills Boost Programme 2021/22 Academic Year (Care)</b> Introduction to Working in Care Preparing to Work in Adult Social Care Dementia Care Common Health Conditions Social Prescribing Boys will be Boys: Gender Neutral Approaches to Play Advanced Certificate in Childhood Practice (prep for HNC) Advanced Certificate in Health & Social Care (prep for HNC SS)	FIFE	Detailed Proposals
1	2	3	4	5	6	<b>Skills Boost Programme 2021/22 Academic Year (Digital)</b> Introduction to Cyber Security NPA PC Passport NPA Cyber Security Introduction to Internet of Things	FIFE	Detailed Proposals
1	2	3	4	5	6	<b>Skills Boost Programme 2021/22 (Business, Hospitality &amp; Marketing)</b> Business and Customer Service Marketing in Organisations Introduction to Business Management EHIS Food Hygiene Certificate Understanding Selling to Customers Understanding the Sales Cycle Communication Skills in Sales	FIFE	Detailed Proposals
1	2	3	4	5	6	<b>Skills Boost Programme 2021/22 AY (Engineering &amp; Construction)</b> Numeracy SCQF Level 5 NPA Gateway to STEM SCQF Level 4 Waste in the Circular Economy SCQF Level 5 NPA Construction Craft & Technician SCQF Level 4 Gateway to Engineering SCQF Level 4 NPA Gateway to Science and Health SCQF Level 4 Electric Vehicle Upskilling for the existing automotive workforce PDA Building Information Modelling (BIM) SCQF Level 8 Awareness of Environmental & Circular Economy Technologies PDA in Advanced Manufacturing SCQF Level 8 PDA in Industrial Automation SCQF Level 8	FIFE	Detailed Proposals



## THIRD PHASE PROPOSALS

Contribution To Mid-Fife Priorities						Project/Description	Area	Status
1	2	3	4	5	6	<b>Community Trade Hub (Cowdenbeath or Lochgelly)</b> Investigate the establishment of a Cowdenbeath area Community Trade Hub, based on the Buckhaven model, with enhanced support for vocational qualifications, work placements and apprenticeships.	CWD	Outline Proposition
1	2	3	4	5	6	<b>Fife College Stenton Campus</b> Planned upgrade of Fife College's Stenton Campus in Glenrothes. Outline Business Case to Scottish Funding Council summer 2021.	GLN	Outline Proposition

## LEGEND: Mid-Fife Investment Priorities

- 1** Providing modern, high-quality business premises
- 3** Skills development & progression; re-skilling & up-skilling our workforce
- 5** Local jobs & access to jobs; Supporting people into employment
- 2** Supporting innovation & supplier development
- 4** Promoting a culture of enterprise
- 6** Promoting place-based investment

3

# Promoting a Culture of Enterprise

Working with key stakeholders to support an enhanced approach to promoting enterprise within Mid-Fife schools and the creation of extended pathways that include work experience, internships, apprenticeships and a network of business role models.

Developing the next generation of enterprise hubs / co-working spaces in key locations, based on the successful Fife Enterprise Hub model, taking cognisance of the impact of Covid-19 on new ways of working and market conditions.

Seeking to create added-value through links culture of enterprise links between schools, start-up support services, enterprise hubs, established local businesses and town centre re-purposing.

## LEGEND: Mid-Fife Investment Priorities

- 1** Providing modern, high-quality business premises
- 3** Skills development & progression; re-skilling & up-skilling our workforce
- 5** Local jobs & access to jobs; Supporting people into employment
- 2** Supporting innovation & supplier development
- 4** Promoting a culture of enterprise
- 6** Promoting place-based investment

## FIRST PHASE PROPOSALS

Contribution To Mid-Fife Priorities						Project/Description	Area	Status
1	2	3	4	5	6	<b>Business Gateway Fife Support Services</b> Finance, training and advice provided to start-up and existing businesses by Business Gateway Fife.	FIFE	In Progress
1	2	3	4	5	6	<b>Lead with Women's Enterprise Scotland</b> Annual women's leadership development programme.	FIFE	In Progress
1	2	3	4	5	6	<b>Energy Enterprise Challenge</b> Annual challenge for Levenmouth primary school pupils delivered in partnership with Bright Green Hydrogen.	LVN	In Progress
1	2	3	4	5	6	<b>Raytheon Quadcopter Challenge Programme</b> Encourage pupil and school participation in national competition challenging 14-to 15-year olds to build their own flying devices.	FIFE	In Progress
1	2	3	4	5	6	<b>Raytheon STEM Outreach Programme</b> Encourage pupil and school participation in Raytheon's national programme.	FIFE	In Progress
1	2	3	4	5	6	<b>Social Enterprise CPD Event for Schools</b> Annual CPD event for High School pupils.	FIFE	In Progress
1	2	3	4	5	6	<b>Social Enterprise Dragons' Den</b> Annual programme delivered in Fife high and primary schools.	FIFE	In Progress
1	2	3	4	5	6	<b>3D Printing Programme</b> Annual programme delivered in Fife primary schools.	FIFE	In Progress
1	2	3	4	5	6	<b>Virtual Coding Academy</b> Annual programme delivered in Fife primary schools.	FIFE	In Progress
1	2	3	4	5	6	<b>In the Footsteps of Kings Foundation Apprenticeship Project</b> Work placement project for one year Foundation Apprenticeship in Business Skills for S5/S6 school pupils.	FIFE	In Progress
1	2	3	4	5	6	<b>Food, Drink &amp; Hospitality Showcase Event</b> Annual event promoting careers in the food, drink and hospitality industries.	FIFE	In Progress

## THIRD PHASE PROPOSALS

Contribution To Mid-Fife Priorities						Project/Description	Area	Status
1	2	3	4	5	6	<b>Possible Enterprise Hub in Cowdenbeath or Lochgelly</b> Consideration of an enterprise hub development for Cowdenbeath or Lochgelly subject to market conditions.	CWD	Outline Proposition
1	2	3	4	5	6	<b>Possible Enterprise Hub in Kirkcaldy</b> Consideration of an enterprise hub development for Kirkcaldy subject to market conditions, possibly as part of a town centre re-purposing.	KDY	Outline Proposition
1	2	3	4	5	6	<b>Possible Enterprise Hub in Leven</b> Consideration of an enterprise hub development for Leven subject to market conditions, possibly as part of new rail station development.	LVN	Outline Proposition

## LEGEND: Mid-Fife Investment Priorities

- 1** Providing modern, high-quality business premises
- 3** Skills development & progression; re-skilling & up-skilling our workforce
- 5** Local jobs & access to jobs; Supporting people into employment
- 2** Supporting innovation & supplier development
- 4** Promoting a culture of enterprise
- 6** Promoting place-based investment

4

# Supporting Local Jobs & Access to Employment

Supporting those with multiple barriers to accessing and sustaining employment opportunities.

Promoting opportunities for young people joining the workforce

Supporting those with complex disabilities and health conditions into work

Addressing barriers to getting more women in Mid-Fife into employment; including skills development, access to childcare, transport, flexible working, safety and fair work practices, and healthcare support.

## FIRST PHASE PROPOSALS

Contribution To Mid-Fife Priorities						Project/Description	Area	Status
1	2	3	4	5	6	<b>Fife Employability Programmes</b> Current ESF/OFP funded programmes providing assistance to people facing multiple barriers to accessing and sustaining employment.	FIFE	In Progress
1	2	3	4	5	6	<b>Fife No-One Left Behind</b> Projects providing support to those facing barriers to accessing and sustaining employment.	FIFE	In Progress
1	2	3	4	5	6	<b>Special Schools Employability Support Project</b> Offers a person centred/tailored employability programme for people with complex disabilities and health conditions	FIFE	In Progress
1	2	3	4	5	6	<b>Kickstart Gateway Provision</b> Providing Kickstart Gateway support to employers to provide 6-month paid work placements to young people (18-24 yrs) on Universal Credit through the UK Government Kickstart Scheme.	FIFE	In Progress
						<b>Positive Pathways to Work for Parents</b> A remote short-term programme for parents of children of all ages; more focussed on women returners, grandparents with caring responsibilities, parents of children with disabilities/health conditions.	FIFE	In Progress
1	2	3	4	5	6	<b>Pathways to Work for Young People</b> Two-week digital programme and on-going support targeted at those furthest from employment. Programme successfully completed.	FIFE	Completed
1	2	3	4	5	6	<b>Edinburgh and South East Scotland City Region Deal Data Driven Innovation (DDI) Skills Gateway</b> The Data Education for Colleges strand of the DDI Skills Gateway Project targets women returners to education and work.	FIFE	In Progress
				5		<b>Fife Job Contract Programme</b> Provision of a single portal for employers to apply for support to help pay the wages of new employees. Provides access to all current funding available via one application to deliver an all-age group offer that seeks to match priority Fife clients to those jobs created.	FIFE	In Progress

## SECOND PHASE PROPOSALS

Contribution To Mid-Fife Priorities						Project/Description	Area	Status
1	2	3	4	5	6	<b>Accessible Fife Project</b> Pre-apprenticeship programme for young people with disabilities and health conditions. Review core establishment/funding to assess capacity to deliver in-house and/or seek alternate sources of income or funding to support delivery.	FIFE	Detailed Proposals



# Place-Based Investment

Adopting a place-based approach recognises the need for quality of place as a driver for, and determinant of, successful local economies.

The changing retail market, accelerated by the economic impact of the Covid-19 pandemic, is having a profound effect on the high street. The challenge ahead is to re-purpose our town centres to create greater vibrancy and social connectivity with a focus on user experience, including the evening economy.

Housing and town centre living, alongside transport, green space and access to services, all have a key role to play in supporting the rejuvenation of our town centres and enhancing the attractiveness of Mid-Fife as a great place to live, work, learn, visit and invest.

Natural assets and outdoor facilities provide significant opportunities to promote increased awareness of tourism and active leisure in Mid-Fife via a focus on the quality of the product offering and associated infrastructure (notably accommodation).

## Key activities include:

- Acquisition of buildings, for clearance or repurposing for housing, or linking to food poverty and community wealth building
- Building improvement grants (focus on visual improvements, energy efficiency & bringing unused upper floors into productive use)
- Town centre greening, creation of urban parks linking to health and well-being or sustainable energy production such as solar.
- Investment in the next round of built heritage regeneration scheme to target priority buildings.
- Utilising external funding for feasibility studies & project development

## FIRST PHASE PROPOSALS

Contribution To Mid-Fife Priorities						Project/Description	Area	Status
1	2	3	4	5	6	<b>Reinstatement of Levenmouth Rail Link</b> Reinstatement of the Levenmouth rail link and construction of new stations at Leven and Cameron Bridge to link into Fife Circle line at Thornton North junction.	LVN	Detailed Proposals
1	2	3	4	5	6	<b>Refurbishment of Cowdenbeath Town House</b> Carrying out essential repairs and energy efficiency measures to the Town House on Cowdenbeath High Street.	CWD	In Progress
1	2	3	4	5	6	<b>Former DSS Site, Factory Road, Cowdenbeath</b> Mixed-use social housing-led development. Ground remediation led by FC; site development by Kingdom Housing Association; Ore Valley Housing Association as residential landlord.	CWD	In Progress
1	2	3	4	5	6	<b>Glenrothes Town Centre Public Realm Improvements</b> Improving routes between key assets focusing on: Kingdom Avenue to Riverside Park; landscaping of Kingdom House site; improvements to pavilion; car parking and a viewing platform.	GLN	In Progress
1	2	3	4	5	6	<b>Waterfront Public Realm Improvements; Phase 1</b> £1.6m council-funded project to better connect the waterfront and High Street.	KDY	In Progress
1	2	3	4	5	6	<b>Waterfront Public Realm Improvements; Phase 2</b> Improvements between Tolbooth and Nicol Streets and along the back of the Mercat and fronting Volunteers Green.	KDY	In Progress

1	2	3	4	5	6	<b>Waterfront Links, Kirkcaldy</b> Exploring further opportunities to open up access between the High Street and waterfront.	KDY	In Progress
1	2	3	4	5	6	<b>Leven High Street Community Hub</b> Re-development of the former WH Smith High Street site	LVN	In Progress
1	2	3	4	5	6	<b>Rockgelly Climbing &amp; Bouldering Centre</b> Re-development of former St Andrews Church in Lochgelly into a climbing and bouldering centre to be run by a social enterprise.	CWD	In Progress
1	2	3	4	5	6	<b>Fife 191 Tourist Route</b> Development and launch of new tourist driving route within Fife that includes Mid-Fife stops in Leven and Lower Largo.	FIFE	In Progress

## SECOND PHASE PROPOSALS

Contribution To Mid-Fife Priorities						Project/Description	Area	Status
1	2	3	4	5	6	<b>River Leven Project: Improving access to the River Leven.</b> Connectivity Project aims to create award-winning network of paths and cycleways along the 5km stretch of the river and a 20km network of paths through and between local towns in the area.	LVN	Detailed Proposals
1	2	3	4	5	6	<b>Silverburn Park</b> Redevelopment of former flax mill into a visitor centre and backpackers' hostel. Project supports Silverburn Park campsite facilities which opened in Sept 2020, alongside Fife Coastal Path.	LVN	Detailed Proposals
1	2	3	4	5	6	<b>Fife Outdoor Tourism Infrastructure Programme</b> Provision of parking, toilets, interpretation points and renewable energy points for EV and EB charging on the Fife Coastal Path, Fife Pilgrims Way and Fife 191 Tourist Route.	FIFE	Detailed Proposals
1	2	3	4	5	6	<b>Former Co-op Gap Site, Kirkcaldy High Street</b> Acquisition of former Furniture World and Co-op gap site for re-development into 39 affordable flats.	KDY	Detailed Proposals
1	2	3	4	5	6	<b>Olympia Arcade, Kirkcaldy</b> Conversion of former linen factory into 13 flats.	KDY	Detailed Proposals

## LEGEND: Mid-Fife Investment Priorities

- |                                                           |                                                                                    |                                                                         |
|-----------------------------------------------------------|------------------------------------------------------------------------------------|-------------------------------------------------------------------------|
| <b>1</b> Providing modern, high-quality business premises | <b>3</b> Skills development & progression; re-skilling & up-skilling our workforce | <b>5</b> Local jobs & access to jobs; Supporting people into employment |
| <b>2</b> Supporting innovation & supplier development     | <b>4</b> Promoting a culture of enterprise                                         | <b>6</b> Promoting place-based investment                               |

## THIRD PHASE PROPOSALS

Contribution To Mid-Fife Priorities						Project/Description	Area	Status
1	2	3	4	5	6	<b>Levenmouth Reconnected Blueprint</b> Delivery of £10m programme of improvements to maximise the economic benefits of the new rail link	LVN	Outline Proposition
1	2	3	4	5	6	<b>Former Crown Hotel Site, Cowdenbeath</b> Potential acquisition and redevelopment of the former Crown Hotel on Cowdenbeath High Street; with potential links to development options for library site opposite.	CWD	Outline Proposition
1	2	3	4	5	6	<b>Former Fabtek Site, Lochgelly</b> Site remediation for proposed mixed-use affordable housing / commercial development site.	CWD	Outline Proposition
1	2	3	4	5	6	<b>Loanhead Avenue, Ballingry</b> Review land use strategy to retain serviced employment land to meet local requirements	CWD	Outline Proposition
1	2	3	4	5	6	<b>Glenrothes Town Centre Masterplan</b> Delivery of town centre masterplan developed by Halliday Fraser Munro which has identified 9 key development sites within the town centre and potential options for redevelopment.	GLN	Outline Proposition
1	2	3	4	5	6	<b>The Kirkcaldy Centre</b> Possible redevelopment of centre (formerly The Postings Shopping Centre).	KDY	Outline Proposition
1	2	3	4	5	6	<b>Acquisition of key high streets sites, Kirkcaldy</b> Acquisition of further key sites on Kirkcaldy High Street to support town centre re-development/repurposing	KDY	Outline Proposition
1	2	3	4	5	6	<b>Basin Car Park &amp; Former Bus Depot Site, Kirkcaldy</b> Re-development of basin car park and former bus depot sites as part of the rejuvenation of the waterfront	KDY	Outline Proposition
1	2	3	4	5	6	<b>Tourist Accommodation, Lochore Meadows</b> Proposed private development of 80 holiday lodges, café, office, retail space and other amenities adjacent to Lochore Meadows Country Park.	CWD	Outline Proposition
1	2	3	4	5	6	<b>Outdoor Learning &amp; Activity Centre, Pitcairn</b> Proposed development of outdoor learning and activity centre and new woodland near the existing Pitcairn Centre	GLN	Outline Proposition
1	2	3	4	5	6	<b>Kirkcaldy Waterfront Public Art Trail</b> Proposed development of art trail to support ongoing public realm improvements. Sculpture project at Volunteers Green being considered to mark 60th anniversary of Ingolstadt twin town links.	KDY	Outline Proposition
1	2	3	4	5	6	<b>Leven Whale Public Art Project</b> Community-led proposal to combine big art, engineering and green tourism to create a unique attraction in the style of The Kelpies.	LVN	Outline Proposition

## LEGEND: Mid-Fife Investment Priorities

- |                                                           |                                                                                    |                                                                         |
|-----------------------------------------------------------|------------------------------------------------------------------------------------|-------------------------------------------------------------------------|
| <b>1</b> Providing modern, high-quality business premises | <b>3</b> Skills development & progression; re-skilling & up-skilling our workforce | <b>5</b> Local jobs & access to jobs; Supporting people into employment |
| <b>2</b> Supporting innovation & supplier development     | <b>4</b> Promoting a culture of enterprise                                         | <b>6</b> Promoting place-based investment                               |



Invest Fife is an investment initiative supported by Fife Council and works in partnership with Scottish Enterprise and Scottish Development International.

#fifemeansbusiness