

North

LEGEND

- Denotes 20mm black basalt gravel
- Denotes dark grey permeable pavers
- Denotes new HRA asphalt road to FC Transportation standards
- Denotes new HRA asphalt footpath to FC Transportation standards
- landscaped gravel garden area with feature planting per Fife Council parks Dept design
- Denotes dropped kerb

Dunnikier GIA m2	
Name	Area
UNIT 1	126 m ²
UNIT 2	126 m ²
UNIT 3	126 m ²
UNIT 4	97 m ²
UNIT 5	97 m ²
UNIT 6	97 m ²
UNIT 7	97 m ²
Dunnikier GIA m2:	766 m ²

Dunnikier GIA sqft	
Name	Area
UNIT 1	1355 ft ²
UNIT 2	1355 ft ²
UNIT 3	1355 ft ²
UNIT 4	1046 ft ²
UNIT 5	1046 ft ²
UNIT 6	1046 ft ²
UNIT 7	1046 ft ²
Dunnikier GIA sqft:	8250 ft ²

REV	DATE	DESCRIPTION	BY
A	11/02/2020	Revision 1 (North block relocated, Disabled bays extended, Bin store relocated, Cycle loops added, Landscape adjustments.)	



ASSETS, TRANSPORTATION & ENVIRONMENT

Senior Manager (Property Services): ALAN PAUL
Bankhead Central, 1 Bankhead Park, Glenrothes, Fife, KY7 6GH
Tel: 03451 555 555 E-mail: property_clientgroup@fife.gov.uk

Drawing Status:

Planning

Contract Administrator:	Sheet Size:
David McDougall	A1
Drawn By:	Date:
DMcD	09/03/19
Scale:	Checked By:
As indicated	DMcD

Property Address:
Dunnikier Business Park
Midfield Drive
Kirkcaldy
KY1 3LW

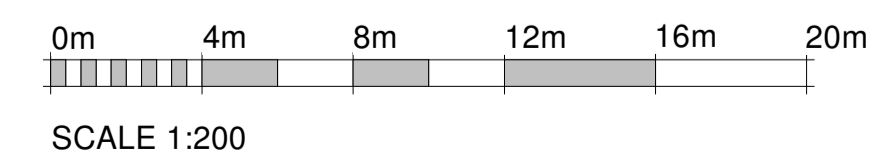
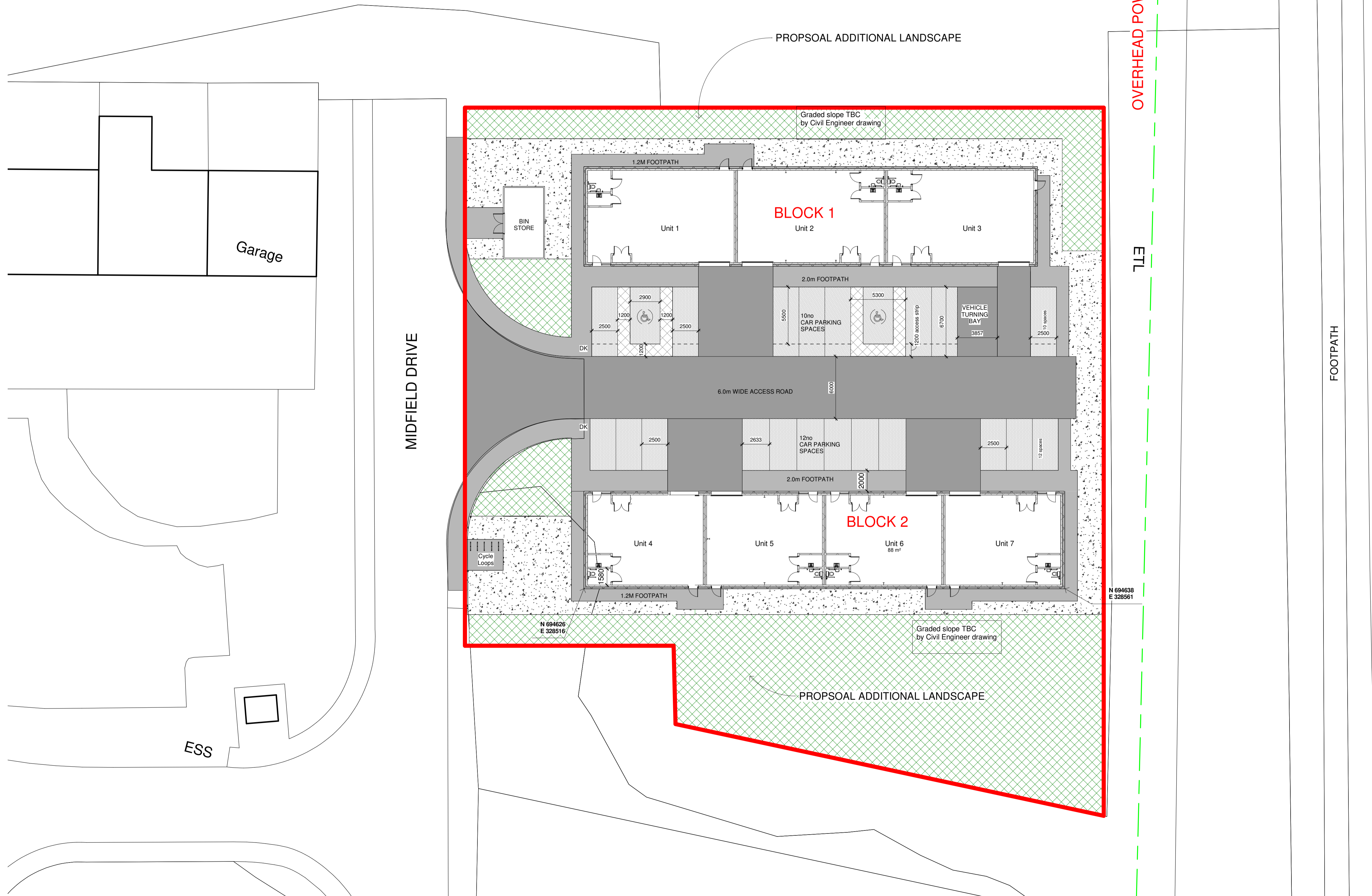
Project Title:
Dunnikier Business Units

Drawing Title:
Site Plan

Works Order Number:	UPRN:
DS3950931	000

Drawing Number:
L(PL)101

Revision:
A



Site Plan
1 : 200